



**BRACEWELL ENGINEERING, INC.**

6239 COLLEGE AVE., SUITE 202, OAKLAND, CA 94618  
(510) 547-8205 FAX (510) 547-8208

January 22, 2007

California Regional Water Quality Control Board  
Central Coast Region  
Attention: Monitoring and Reporting Review Section  
895 Aerovista Place, Suite 101  
San Luis Obispo, CA 93401

Dear Mr. Briggs:

**Facility Name:** City of San Juan Bautista Wastewater Treatment Plant

**Address:** Bracewell Engineering, Inc.  
College Ave., Suite 202  
Oakland, CA 94618

**Contact Person:** Lloyd Bracewell  
**Job Title:** Sanitary Engineer  
**Phone Number:** 510-547-8205

**NPDES Order No.:** R3-2003-0087, Permit CA 0047902  
**WDID Number:** 3 421015001

**Type of Report:** Annual

**Months:**

**Year:** 2006

**Violations:**  No (there are no violations to report)  Yes

*If Yes is marked (complete a-g)*

**a) Parameter(s) in Violation:**

**b) Section(s) of WDR Violated:**

**c) Reported Value(s):**

**d) WDR Limit/Condition:**

**e) Dates of Violation(s):**  
(reference page of report/data sheet):

**f) Explanation of Causes(s):**  
(attach additional information as needed)

**g) Corrective Action(s):**

**Other Information:** Attached is our annual report providing tabular and graphical summaries of all monitoring data that have been obtained during the past year. As required, this report includes discussion of compliance, operator status, operation and maintenance manual status, laboratories used and monitoring performance, and sludge disposal.

In accordance with the Standard Provisions and Reporting Requirements, I certify under penalty of law that this document and all attachments are prepared under my direction or supervision following a system designed to assure that qualified personnel properly gather and evaluate the information submitted. Based on my knowledge of the person(s) who manage the system, or those persons directly responsible for data gathering, the information submitted is, to the best of my knowledge and belief, true, accurate, and complete. I am aware that there are significant penalties for submitting false information, including the possibility of fine and imprisonment.

Respectfully submitted,  
BRACEWELL ENGINEERING, INC.



Lloyd W. Bracewell, PhD, RCE  
Plant Engineer

cc: Treatment Plant  
BEI Office  
San Juan Bautista



**BRACEWELL ENGINEERING, INC.**

6239 COLLEGE AVE., SUITE 202, OAKLAND, CA 94618  
(510) 547-8205 FAX (510) 547-8208

January 22, 2007

Mr. Roger W. Briggs  
Executive Officer  
California Regional Water Quality  
Control Board, Central Coast Region  
895 Aerovista Place, Suite 101  
San Luis Obispo, CA 93401

Attention: Surveillance Division

Re: City of San Juan Bautista Treatment Plant  
2006 Annual Self-Monitoring Report - Permit CA 0047912

Dear Mr. Briggs:

Enclosed is the annual Discharger Self-Monitoring Report for the City of San Juan Bautista Wastewater Treatment Plant. The report provides tabular and graphical summaries of all monitoring data that have been obtained during the past year. As required, this report includes discussion of compliance, operator status, operation and maintenance manual status, laboratories used and monitoring performance, and sludge disposal.

**Compliance**

Based on the data collected and reported during the past year, the plant effluent was in compliance with all limits during the year. The possible exception is effluent chloride where the limit is a monthly average cannot exceed 200 mg/L and single samples in September and December 2006 exceeded this numerical limit. However, since Standard Provisions require a minimum of 4 weekly samples to establish compliance with a monthly average, technically this was not a violation of the discharge requirements. A verbal request was made in September 2006 to the area engineer regarding whether or not the monitoring frequency needed to be changed to weekly to establish requirements and we have not yet received a response.

**Plant Operators**

The treatment plant has available four full-time plant operators. Their names and grades of certification are as follows:

<u>Name</u>	<u>Grade of Certification</u>
Dan Graw	Grade III (chief plant operator)
Jose Rodriguez	Grade I
Peter Rodriguez	Grade I
Hernan Arteaga	Grade I

## **O&M Manual**

The O&M Manual was updated in 2001 and is current for the existing treatment plant.

## **Laboratories**

The San Juan Bautista Plant does not have a certified analytical laboratory but instead uses the Hollister Domestic Plant laboratory. Hollister's analytical laboratory was re-certified by the State Health Department in 2005. Any laboratory tests that we are not certified to perform, such as heavy metals, are carried out at Bolsa Analytical or another State certified commercial laboratory.

## **General Monitoring Requirements**

1. The monitoring location, minimum sampling frequency, and sampling method for each parameter complied with the Monitoring and Reporting Program following 40 CFR Part 136, "Guidelines Establishing Test Procedures for Analysis of Pollutants" unless specifically noted otherwise in the quarterly DMR. In 2006, there were no exceptions to my knowledge.
2. If the results of monitoring a pollutant appear to violate effluent limitations based on a weekly, monthly, 30-day, or six-month period, to the best of our ability, the frequency of sampling was increased to validate the test within the next monitoring period.
3. Water quality analyses for monitoring compliance were performed by a State Department of Health certified laboratory as discussed above. The laboratory maintained a quality assurance program in compliance with the requirements of its laboratory certification. If a State certified commercial laboratory is used and their results are ever suspect, we will split samples with that lab and one or more other certified labs to establish which lab produces results with acceptable accuracy.
4. Samples and measurements taken for the purpose of monitoring were intended to be representative of the monitored activity to the best of my knowledge.
5. All test data collected for monitoring purposes was reported, even if it was more than needed to comply with the testing frequency requirement, to the best of my knowledge.
6. All monitoring instruments and devices used in the monitoring program were properly maintained and calibrated as necessary to ensure their accuracy as specified by the manufacturer and in compliance with our laboratory QA/QC program to the best of my knowledge.
7. Records were maintained of all monitoring information, including all calibration and maintenance records; and all original chart recordings for continuous monitoring

instrumentation. Through a chain of custody system, records are also kept of the date, exact place, and time of sampling; the individual who performed the sampling; the date the analysis was performed; the laboratory and individual who performed the analysis; the analytical techniques used; and the results. Records are maintained for at least 3 years.

### **Sludge Disposal**

The treatment plant has provision for sludge monitoring in its Monitoring and Reporting Program whenever sludge is removed from the ponds for disposal and to measure sludge depths and total solids in the sludge storage pond annually. With the conversion of Pond 1 to an SBR process in 2000, the plant settles, stabilizes and stores sludge in the bottom of Pond 2. The average sludge depth in pond 2 at the end of 2006 was measured at 5.9 feet with 9.1% total solids and 41% volatile. The estimated quantity of sludge stored in Pond 2 at the end of 2006 was 492 tons as dry solids. At the end of 2005, the average sludge depth in pond 2 was 4.2 feet with 7.7% total solids and 49% volatile corresponding to an estimated 299 dry tons. Estimates of the quantity of sludge stored in a pond can vary significantly due to the difficulty in getting representative measurements over a large area but it appears the amount of sludge estimated in 2005 was low at 299 dry tons since the sludge estimate in 2004 was 414 dry tons. With the depth of sludge in Pond 2 estimated to be at a depth of about 6 feet, plans are being developed to dredge sludge from Pond 2 and dewater for land disposal.

### **Local Source Control Program**

The City does not have a formal local source control program except for grease because the City has no industrial base but does have a number of restaurants. As a result, restaurant grease traps were inspected in October 2006. Treatment plant effluent testing for toxic chemicals in 2006 did not show any constituents above the level of detection or if it was, it was below the limits set for that parameter.

Respectfully submitted,  
BRACEWELL ENGINEERING, INC.

  
Lloyd W. Bracewell, PhD, RCE  
Plant Engineer

cc: City of San Juan Bautista  
Treatment Plant  
BEI Office

DISCHARGER SELF MONITORING REPORT

San Juan Bautista Wastewater Treatment Plant      Central Coast RWQCB  
 311 Second Street, P.O. Box 1086                      895 Aerovista Place, Suite 101  
 San Juan Bautista, CA 95054-1086                      San Luis Obispo, CA 93401  
 Permit No. CA00479      Discharge No. 001-A              Report Year: 2006

MONTH	FLOW Influent, Single Samples					MAX FLOW Influent, Single Samples					FLOW Effluent, 6 Month Avg. Nov-Apr			FLOW Effluent, 6 Month Avg. May-Oct			VOLUME Septage, Single Samples								
	MAX	MIN	AVG	Ex/Total	counts	MAX	MIN	AVG	Ex/Total	counts	MGD	mgd	AVG	Ex/Total	counts	mgd	AVG	Ex/Total	counts	MAX	MIN	AVG	Ex/Total	counts	
JAN-06	0.417	0.172	0.212	0	31	1.382	1.296	1.334	0	31			0.167	0	1										
FEB-06	0.198	0.166	0.177	0	28	1.584	1.094	1.205	0	28			0.164	0	1					900	900	900	0	1	
MAR-06	0.337	0.167	0.253	0	31	1.584	1.094	1.214	0	31			0.174	0	1										
APR-06	0.521	0.239	0.308	0	30	1.411	1.145	1.216	0	30			0.191	0	1										
MAY-06	0.328	0.207	0.238	0	31	1.512	0.706	0.977	0	31						0.206	0	1		900	900	900	0	2	
JUN-06	0.328	0.239	0.276	0	30	1.282	0.720	1.189	0	30						0.214	0	1		900	900	900	0	2	
JUL-06	0.308	0.212	0.266	0	31	1.267	1.210	1.239	0	31						0.217	0	1							
AUG-06	0.304	0.186	0.259	0	31	2.059	0.835	1.233	0	31						0.215	0	1							
SEP-06	0.250	0.128	0.208	0	30	1.555	0.677	0.964	0	30						0.209	0	1							
OCT-06	0.424	0.160	0.225	0	31	1.555	1.498	1.536	0	31						0.205	0	1							
NOV-06	0.386	0.144	0.271	0	30	1.555	1.526	1.549	0	30			0.238	0	1										
DEC-06	0.225	0.108	0.164	0	31	1.555	1.526	1.554	0	31			0.195	0	1										
ANNUAL MAXIMUM	0.521					2.059														900					
ANNUAL MINIMUM		0.108					0.677														900				
ANNUAL AVERAGE			0.238				1.268						0.188				0.211						900		
TOTAL				0	365				0	365				0	6								0	5	

DISCHARGER SELF MONITORING REPORT

San Juan Bautista Wastewater Treatment Plant  
 311 Second Street, P.O. Box 1086  
 San Juan Bautista, CA 95054-1086  
 Permit No. CA00479 Discharge No. 001-A

Central Coast RWQCB  
 895 Aerovista Place, Suite 101  
 San Luis Obispo, CA 93401  
 Report Year: 2006

MONTH	BOD, 5-Day Influent, Single Samples				SUSP SOLID Influent, Single Samples				SETT SOLID Effluent, Single Samples				SETT SOLID Effluent, Monthly Average		
	MAX	MIN	AVG	counts Ex/Total	MAX	MIN	AVG	counts Ex/Total	MAX	MIN	AVG	counts Ex/Total	mL/L	AVG	counts Ex/Total
JAN-06	339	241	290	0 2	446	227	337	0 2	<0.1	<0.1	<0.1	0 5	<0.1	0	1
FEB-06	323	310	317	0 2	420	330	375	0 2	<0.1	<0.1	<0.1	0 4	<0.1	0	1
MAR-06	354	268	311	0 2	460	435	448	0 2	<0.1	<0.1	<0.1	0 4	<0.1	0	1
APR-06	293	152	223	0 2	574	185	380	0 2	<0.1	<0.1	<0.1	0 4	<0.1	0	1
MAY-06	258	181	217	0 3	452	272	341	0 3	<0.1	<0.1	<0.1	0 5	<0.1	0	1
JUN-06	351	290	321	0 2	378	340	359	0 2	<0.1	<0.1	<0.1	0 4	<0.1	0	1
JUL-06	342	270	306	0 2	586	444	515	0 2	<0.1	<0.1	<0.1	0 4	<0.1	0	1
AUG-06	379	367	373	0 2	623	302	463	0 2	<0.1	<0.1	<0.1	0 5	<0.1	0	1
SEP-06	287	247	267	0 2	374	333	354	0 2	<0.1	<0.1	<0.1	0 4	<0.1	0	1
OCT-06	391	307	349	0 2	332	214	273	0 2	<0.1	<0.1	<0.1	0 5	<0.1	0	1
NOV-06	294	170	234	0 3	433	386	415	0 3	<0.1	<0.1	<0.1	0 4	<0.1	0	1
DEC-06	436	131	284	0 2	515	488	502	0 2	<0.1	<0.1	<0.1	0 4	<0.1	0	1
ANNUAL MAXIMUM	436				623				<0.1						
ANNUAL MINIMUM		131				185				<0.1					
ANNUAL AVERAGE			291				397				<0.1			<0.1	
TOTAL				0 26				0 26				0 52			0 12

DISCHARGER SELF MONITORING REPORT

San Juan Bautista Wastewater Treatment Plant      Central Coast RWQCB  
 311 Second Street, P.O. Box 1086                      895 Aerovista Place, Suite 101  
 San Juan Bautista, CA 95054-1086                      San Luis Obispo, CA 93401  
 Permit No. CA00479      Discharge No. 001-A              Report Year: 2006

MONTH	BOD, 5-Day Effluent, Single Samples				BOD, 5-Day Effluent, Monthly Average			BOD, 5-Day Infl/Effl. Monthly Average		
	MAX	MIN	AVG	counts Ex/Total	mg/L	AVG	counts Ex/Total	% removal	AVG	counts Ex/Total
JAN-06	3.9	<3.1	<3.7	0 4		<3.7	0 1		98.7	0 1
FEB-06	4.9	<3.1	<4.2	0 4		<4.2	0 1		98.9	0 1
MAR-06	4.4	<3.0	<3.5	0 5		<3.5	0 1		99.1	0 1
APR-06	12.6	4.7	8.7	0 4		8.7	0 1		97.5	0 1
MAY-06	10.6	<3.3	<7.7	0 5		<7.7	0 1		97.1	0 1
JUN-06	10.7	<3.0	<5.6	0 4		<5.6	0 1		98.4	0 1
JUL-06	10.8	5.0	7.3	0 4		7.3	0 1		97.7	0 1
AUG-06	6.9	3.5	4.5	0 5		4.5	0 1		99.2	0 1
SEP-06	5.1	3.2	4.2	0 4		4.2	0 1		98.5	0 1
OCT-06	3.6	<3.0	<3.4	0 4		<3.4	0 1		99.1	0 1
NOV-06	10.5	<3.0	<5.8	0 5		<5.8	0 1		97.7	0 1
DEC-06	8.8	<3.0	<5.1	0 4		<5.1	0 1		98.5	0 1
ANNUAL MAXIMUM	12.6									
ANNUAL MINIMUM		<3.0								
ANNUAL AVERAGE			<5.3			<5.3			98.4	
TOTAL				0 52			0 12			0 12

DISCHARGER SELF MONITORING REPORT

San Juan Bautista Wastewater Treatment Plant      Central Coast RWQCB  
 311 Second Street, P.O. Box 1086                      895 Aerovista Place, Suite 101  
 San Juan Bautista, CA 95054-1086                      San Luis Obispo, CA 93401  
 Permit No. CA00479      Discharge No. 001-A              Report Year: 2006

MONTH	SUSP SOLID Effluent, Single Samples				SUSP SOLID Effluent, Monthly Average			SUSP SOLID Infl/Effl. Monthly Average		
	MAX	MIN	AVG	counts Ex/Total	mg/L	AVG	counts Ex/Total	% removal	AVG	counts Ex/Total
JAN-06	3.2	<2.0	<2.3	0 4		<2.3	0 1		99.2	0 1
FEB-06	<2.0	<2.0	<2.0	0 4		<2.0	0 1		99.5	0 1
MAR-06	<2.0	<2.0	<2.0	0 5		<2.0	0 1		99.6	0 1
APR-06	5.5	2.7	3.9	0 4		3.9	0 1		99.3	0 1
MAY-06	3.7	<2.0	<2.4	0 5		<2.4	0 1		99.4	0 1
JUN-06	2.1	<2.0	<2.1	0 4		<2.1	0 1		99.6	0 1
JUL-06	4.1	<2.0	<2.7	0 4		<2.7	0 1		99.5	0 1
AUG-06	2.0	<2.0	<2.0	0 5		<2.0	0 1		99.6	0 1
SEP-06	2.0	<2.0	<2.0	0 4		<2.0	0 1		99.5	0 1
OCT-06	3.9	<2.0	<3.1	0 4		<3.1	0 1		98.9	0 1
NOV-06	3.0	<2.0	<2.3	0 5		<2.3	0 1		99.5	0 1
DEC-06	2.4	<2.0	<2.1	0 4		<2.1	0 1		99.6	0 1
ANNUAL MAXIMUM	5.5									
ANNUAL MINIMUM		<2.0								
ANNUAL AVERAGE			<2.4			<2.4			99.4	
TOTAL				0 52			0 12			0 12

DISCHARGER SELF MONITORING REPORT

San Juan Bautista Wastewater Treatment Plant      Central Coast RWQCB  
 311 Second Street, P.O. Box 1086                      895 Aerovista Place, Suite 101  
 San Juan Bautista, CA 95054-1086                      San Luis Obispo, CA 93401  
 Permit No. CA00479      Discharge No. 001-A              Report Year: 2006

MONTH	COLIFORMS				COLIFORMS			COLIFORMS				FREEBOARD				FREEBOARD			
	Effluent, Single Samples				Effluent, 20% of Samples			Effluent, 5 Smp Moving Median				Pond 1, Single Samples				Pond 2, Single Samples			
	MAX	MIN	AVG	counts Ex/Total	MPN/100mL	AVG	counts Ex/Total	MPN/100mL	AVG	counts Ex/Total	MAX	MIN	AVG	counts Ex/Total	MAX	MIN	AVG	counts Ex/Total	
JAN-06	<2	<2	<2	0 9	<2	0 1	<2.0	0 9	9.3	6.7	8.7	0 27	4.7	3.6	4.1	0 27			
FEB-06	<2	<2	<2	0 8	<2	0 1	<2.0	0 8	9.4	9.0	9.3	0 24	4.5	4.0	4.3	0 24			
MAR-06	2	<2	<2	0 9	<2	0 1	<2.0	0 9	9.3	7.3	8.6	0 27	4.5	3.8	4.2	0 27			
APR-06	2	<2	<2	0 9	<2	0 1	<2.0	0 9	9.3	6.0	7.8	0 26	4.3	3.0	3.7	0 26			
MAY-06	30	<2	<5	0 9	<5	0 1	<2.0	0 9	9.0	7.8	8.8	0 27	4.6	4.1	4.3	0 27			
JUN-06	2	<2	<2	0 9	<2	0 1	<2.0	0 9	9.0	7.6	8.8	0 26	4.2	3.3	3.7	0 26			
JUL-06	2	<2	<2	0 9	<2	0 1	<2.0	0 9	9.0	8.4	8.9	0 26	4.5	3.3	3.7	0 26			
AUG-06	2	<2	<2	0 9	<2	0 1	<2.0	0 9	9.0	8.6	8.9	0 27	4.6	3.7	4.1	0 27			
SEP-06	<2	<2	<2	0 8	<2	0 1	<2.0	0 8	9.1	8.7	9.0	0 26	4.7	4.2	4.4	0 26			
OCT-06	2	<2	<2	0 9	<2	0 1	<2.0	0 9	9.0	8.6	8.9	0 26	4.6	3.9	4.2	0 26			
NOV-06	23	<2	<4	0 9	<4	0 1	<2.0	0 9	9.2	8.2	8.7	0 26	4.6	4.0	4.3	0 26			
DEC-06	<2	<2	<2	0 8	<2	0 1	<2.0	0 8	9.2	8.6	9.0	0 28	4.6	4.0	4.3	0 27			
ANNUAL MAXIMUM	<30								9.4				4.7						
ANNUAL MINIMUM		<2								6.0				3.0					
ANNUAL AVERAGE			<2		<2		<2.0				8.8				4.1				
TOTAL				0 105		0 12		0 105				0 316					0 315		

DISCHARGER SELF MONITORING REPORT

San Juan Bautista Wastewater Treatment Plant  
 311 Second Street, P.O. Box 1086  
 San Juan Bautista, CA 95054-1086  
 Permit No. CA00479

Central Coast RWQCB  
 895 Aerovista Place, Suite 101  
 San Luis Obispo, CA 93401  
 Discharge No. 001-A  
 Report Year: 2006

MONTH	DIS OXYGEN Effluent, Single Samples				pH Effluent, Single Samples				TEMPERATUR Effluent, Single Samples				TOT PHOSPH Effluent, Single Samples			
	MAX	MIN	AVG	counts Ex/Total	MAX	MIN	AVG	counts Ex/Total	MAX	MIN	AVG	counts Ex/Total	MAX	MIN	AVG	counts Ex/Total
JAN-06	10.1	8.5	9.3	0 4	7.2	7.0	7.1	0 5	10.1	8.7	9.6	0 4				
FEB-06	9.1	7.3	8.2	0 5	7.3	7.2	7.3	0 4	14.8	10.1	12.5	0 5				
MAR-06	10.1	6.7	8.9	0 4	7.1	7.0	7.1	0 4	15.7	9.4	11.6	0 4	1.1	1.1	1.1	0 1
APR-06	11.2	8.4	9.6	0 4	7.1	7.0	7.0	0 4	14.3	12.3	13.2	0 4				
MAY-06	8.5	7.0	8.0	0 5	7.1	7.0	7.1	0 5	17.3	15.1	16.3	0 5				
JUN-06	6.9	6.3	6.7	0 4	7.2	7.0	7.1	0 6	23.9	17.4	21.2	0 6	1.7	1.7	1.7	0 1
JUL-06	7.2	5.9	6.6	0 4	7.1	7.0	7.1	0 4	23.7	20.2	21.8	0 4				
AUG-06	7.7	6.2	7.0	0 5	7.1	7.0	7.1	0 5	21.0	19.4	20.4	0 5				
SEP-06	8.1	7.1	7.6	0 4	7.3	7.3	7.3	0 4	20.8	18.4	19.3	0 4	3.2	3.2	3.2	0 1
OCT-06	9.1	8.1	8.5	0 5	7.5	7.1	7.4	0 5	19.2	15.2	17.2	0 5				
NOV-06	8.0	7.2	7.7	0 4	7.4	7.2	7.3	0 4	17.0	12.5	15.0	0 4				
DEC-06	9.0	7.1	8.0	0 4	7.3	7.0	7.2	0 4	11.6	9.9	11.0	0 4	2.0	2.0	2.0	0 1
ANNUAL MAXIMUM	11.2				7.5				23.9				3.2			
ANNUAL MINIMUM		5.9				7.0				8.7				1.1		
ANNUAL AVERAGE			8.0				7.2				15.8				2.0	
TOTAL				0 52				0 54				0 54				0 4

DISCHARGER SELF MONITORING REPORT

San Juan Bautista Wastewater Treatment Plant  
 311 Second Street, P.O. Box 1086  
 San Juan Bautista, CA 95054-1086  
 Permit No. CA00479 Discharge No. 001-A

Central Coast RWQCB  
 895 Aerovista Place, Suite 101  
 San Luis Obispo, CA 93401  
 Report Year: 2006

MONTH	CL2 RESID				CHLORINE				OIL/GREASE				OIL/GREASE		
	Effluent, Single Samples				Contact Ch. Single Samples				Effluent, Single Samples				Effluent, Monthly Average		
	MAX	MIN	AVG	counts Ex/Total	MAX	MIN	AVG	counts Ex/Total	MAX	MIN	AVG	counts Ex/Total	mg/L	AVG	counts Ex/Total
JAN-06	<0.02	<0.02	<0.02	0 31	0	0	0	0 31	<3.0	<3.0	<3.0	0 1	<3.0	0	1
FEB-06	<0.02	<0.02	<0.02	0 28	0	0	0	0 28	<3.0	<3.0	<3.0	0 1	<3.0	0	1
MAR-06	<0.02	<0.02	<0.02	0 31	0	0	0	0 31	<3.0	<3.0	<3.0	0 1	<3.0	0	1
APR-06	<0.02	<0.02	<0.02	0 30	0	0	0	0 30	<3.0	<3.0	<3.0	0 1	<3.0	0	1
MAY-06	<0.02	<0.02	<0.02	0 31	0	0	0	0 31	<3.0	<3.0	<3.0	0 1	<3.0	0	1
JUN-06	<0.02	<0.02	<0.02	0 30	0	0	0	0 30	<3.0	<3.0	<3.0	0 1	<3.0	0	1
JUL-06	<0.02	<0.02	<0.02	0 31	0	0	0	0 31	<3.0	<3.0	<3.0	0 1	<3.0	0	1
AUG-06	<0.02	<0.02	<0.02	0 31	0	0	0	0 31	<3.0	<3.0	<3.0	0 1	<3.0	0	1
SEP-06	<0.02	<0.02	<0.02	0 30	0	0	0	0 30	<3.0	<3.0	<3.0	0 1	<3.0	0	1
OCT-06	<0.02	<0.02	<0.02	0 31	0	0	0	0 31	<3.0	<3.0	<3.0	0 1	<3.0	0	1
NOV-06	<0.02	<0.02	<0.02	0 30	0	0	0	0 30	<3.0	<3.0	<3.0	0 1	<3.0	0	1
DEC-06	<0.02	<0.02	<0.02	0 31	0	0	0	0 31	<3.0	<3.0	<3.0	0 1	<3.0	0	1
ANNUAL MAXIMUM	<0.02				0				<3.0						
ANNUAL MINIMUM		<0.02				0				<3.0					
ANNUAL AVERAGE			<0.02				0				<3.0			<3.0	
TOTAL				0 365				0 365				0 12			0 12

DISCHARGER SELF MONITORING REPORT

San Juan Bautista Wastewater Treatment Plant      Central Coast RWQCB  
 311 Second Street, P.O. Box 1086                      895 Aerovista Place, Suite 101  
 San Juan Bautista, CA 95054-1086                      San Luis Obispo, CA 93401  
 Permit No. CA00479      Discharge No. 001-A              Report Year: 2006

MONTH	UN-ION NH3					AMMONIA-N					NITRATE					NITRITE					COPPER			
	Effluent, Single Samples					Effluent, Single Samples					Effluent, Single Samples					Effluent, Single Samples					Effluent, Monthly Average			
	MAX	MIN	AVG	counts		MAX	MIN	AVG	counts		MAX	MIN	AVG	counts		MAX	MIN	AVG	counts		ug/L	AVG	counts	
JAN-06																								
FEB-06																								
MAR-06	0.000	0.000	0.000	0	1	0.1	0.1	0.1	0	1	3.57	3.57	3.57	0	1	<0.100	<0.100	<0.100	0	1		8	0	1
APR-06																								
MAY-06																								
JUN-06	0.001	0.001	0.001	0	2	0.3	0.2	0.3	0	2	1.82	1.82	1.82	0	1	<0.100	<0.100	<0.100	0	1		18	0	1
JUL-06																								
AUG-06																								
SEP-06	0.002	0.002	0.002	0	1	0.2	0.2	0.2	0	1	2.10	2.10	2.10	0	1	<0.100	<0.100	<0.100	0	1		17	0	1
OCT-06																								
NOV-06																								
DEC-06	0.001	0.001	0.001	0	1	0.3	0.3	0.3	0	1	6.56	6.56	6.56	0	1	<0.100	<0.100	<0.100	0	1		8	0	1
ANNUAL MAXIMUM	0.002					0.3					6.56					<0.100								
ANNUAL MINIMUM		0.001					0.1					1.82					<0.100							
ANNUAL AVERAGE			0.001				0.2					3.51					<0.100					13		
TOTAL				0	5				0	5				0	4				0	4				

DISCHARGER SELF MONITORING REPORT

San Juan Bautista Wastewater Treatment Plant      Central Coast RWQCB  
 311 Second Street, P.O. Box 1086                      895 Aerovista Place, Suite 101  
 San Juan Bautista, CA 95054-1086                      San Luis Obispo, CA 93401  
 Permit No. CA00479      Discharge No. 001-A              Report Year: 2006

MONTH	TDS					SODIUM					CHLORIDE					SULFATE					HARDNESS				
	Influent, Single Samples			counts		Influent, Single Samples			counts		Influent, Single Samples			counts		Influent, Single Samples			counts		Influent, Single Samples			counts	
	MAX	MIN	AVG	Ex/Total		MAX	MIN	AVG	Ex/Total		MAX	MIN	AVG	Ex/Total		MAX	MIN	AVG	Ex/Total		MAX	MIN	AVG	Ex/Total	
JAN-06	1124	1124	1124	0	1	205	205	205	0	1	282	282	282	0	1	120	120	120	0	1	476	476	476	0	1
FEB-06	1244	1244	1244	0	1	278	278	278	0	1	420	420	420	0	1	108	108	108	0	1	452	452	452	0	1
MAR-06	972	972	972	0	1	160	160	160	0	1	224	224	224	0	1	88	88	88	0	1	396	396	396	0	1
APR-06	1012	1012	1012	0	1	186	186	186	0	1	258	258	258	0	1	153	153	153	0	1	504	504	504	0	1
MAY-06	1096	1096	1096	0	1	216	216	216	0	1	298	298	298	0	1	76	76	76	0	1	460	460	460	0	1
JUN-06	940	940	940	0	1	167	167	167	0	1	176	176	176	0	1	126	126	126	0	1	412	412	412	0	1
JUL-06	1168	1168	1168	0	1	192	192	192	0	1	192	192	192	0	1	98	98	98	0	1	452	452	452	0	1
AUG-06	1288	1288	1288	0	1	206	206	206	0	1	254	254	254	0	1	82	82	82	0	1	452	452	452	0	1
SEP-06	1144	1144	1144	0	1	234	234	234	0	1	346	346	346	0	1	124	124	124	0	1	500	500	500	0	1
OCT-06	1610	1610	1610	0	1	285	285	285	0	1	554	554	554	0	1	105	105	105	0	1	528	528	528	0	1
NOV-06	1390	1390	1390	0	1	224	224	224	0	1	380	380	380	0	1	166	166	166	0	1	540	540	540	0	1
DEC-06	1027	1027	1027	0	1	165	165	165	0	1	220	220	220	0	1	139	139	139	0	1	472	472	472	0	1
ANNUAL MAXIMUM	1610					285					554				166					540					
ANNUAL MINIMUM		940					160				176					76					396				
ANNUAL AVERAGE			1168					210				300					115					470			
TOTAL				0	12				0	12				0	12				0	12				0	12

DISCHARGER SELF MONITORING REPORT

San Juan Bautista Wastewater Treatment Plant      Central Coast RWQCB  
 311 Second Street, P.O. Box 1086                      895 Aerovista Place, Suite 101  
 San Juan Bautista, CA 95054-1086                      San Luis Obispo, CA 93401  
 Permit No. CA00479      Discharge No. 001-A              Report Year: 2006

MONTH	TDS				SODIUM				CHLORIDE				SULFATE				HARDNESS			
	Water	Sup.	Single	Samples	Water	Sup.	Single	Samples	Water	Sup.	Single	Samples	Water	Sup.	Single	Samples	Water	Sup.	Single	Samples
	MAX	MIN	AVG	Ex/Total	MAX	MIN	AVG	Ex/Total	MAX	MIN	AVG	Ex/Total	MAX	MIN	AVG	Ex/Total	MAX	MIN	AVG	Ex/Total
JAN-06																				
FEB-06																				
MAR-06																	396	396	396	0 1
APR-06																				
MAY-06																				
JUN-06	536	536	536	0 1	115	115	115	0 1	75	75	75	0 1	103	103	103	0 1	400	400	400	0 1
JUL-06																				
AUG-06																				
SEP-06																	398	398	398	0 1
OCT-06																				
NOV-06																				
DEC-06																	408	408	408	0 1
ANNUAL MAXIMUM	536				115				75				103				408			
ANNUAL MINIMUM		536				115				75				103				396		
ANNUAL AVERAGE			536			115				75				103					401	
TOTAL				0 1				0 1				0 1				0 1				0 4

DISCHARGER SELF MONITORING REPORT

San Juan Bautista Wastewater Treatment Plant      Central Coast RWQCB  
 311 Second Street, P.O. Box 1086                      895 Aerovista Place, Suite 101  
 San Juan Bautista, CA 95054-1086                      San Luis Obispo, CA 93401  
 Permit No. CA00479      Discharge No. 001-A              Report Year: 2006

MONTH	CHLORIDE			SODIUM			HARDNESS				SULFATE			TDS			
	Effluent, Monthly mg/L	Average counts	Ex/Total	Effluent, Monthly mg/L	Average counts	Ex/Total	Effluent, Single Samples mg/L			Effluent, Monthly mg/L	Average counts	Ex/Total	Effluent, Monthly mg/L	Average counts	Ex/Total		
	AVG			AVG			MAX	MIN	AVG	Ex/Total	AVG		AVG				
JAN-06																	
FEB-06																	
MAR-06	260	0	1	195	0	1	468	468	468	0	1	179	0	1	1076	0	1
APR-06																	
MAY-06																	
JUN-06	272	0	1	228	0	1	500	500	500	0	1	197	0	1	1142	0	1
JUL-06																	
AUG-06																	
SEP-06	276	0	1	228	0	1	456	456	456	0	1	165	0	1	1094	0	1
OCT-06																	
NOV-06																	
DEC-06	276	0	1	199	0	1	452	452	452	0	1	119	0	1	1057	0	1
ANNUAL MAXIMUM							500										
ANNUAL MINIMUM								452									
ANNUAL AVERAGE	271			213					469			165			1092		
TOTAL		0	4		0	4				0	4		0	4		0	4

DISCHARGER SELF MONITORING REPORT

San Juan Bautista Wastewater Treatment Plant  
 311 Second Street, P.O. Box 1086  
 San Juan Bautista, CA 95054-1086  
 Permit No. CA00479

Central Coast RWQCB  
 895 Aerovista Place, Suite 101  
 San Luis Obispo, CA 93401  
 Report Year: 2006

MONTH	DIS OXYGEN				TEMP				PH				TURBIDITY			
	Upstream, Single Samples				Upstream, Single Samples				Upstream, Single Samples				Upstream, Single Samples			
	MAX	MIN	AVG	counts Ex/Total	MAX	MIN	AVG	counts Ex/Total	MAX	MIN	AVG	counts Ex/Total	MAX	MIN	AVG	counts Ex/Total
JAN-06																
FEB-06																
MAR-06	12.5	12.5	12.5	0 1	12.4	12.4	12.4	0 1	7.0	7.0	7.0	0 1	5.2	5.2	5.2	0 1
APR-06	7.2	7.2	7.2	0 1	14.5	14.5	14.5	0 1	7.2	7.2	7.2	0 1	6.6	6.6	6.6	0 1
MAY-06																
JUN-06																
JUL-06																
AUG-06																
SEP-06																
OCT-06																
NOV-06																
DEC-06	5.6	5.6	5.6	0 1	11.0	11.0	11.0	0 1	7.1	7.1	7.1	0 1	10.2	10.2	10.2	0 1
ANNUAL MAXIMUM	12.5				14.5				7.2				10.2			
ANNUAL MINIMUM		5.6				11.0				7.0				5.2		
ANNUAL AVERAGE			8.4				12.6				7.1				7.3	
TOTAL				0 3				0 3				0 3				0 3

DISCHARGER SELF MONITORING REPORT

San Juan Bautista Wastewater Treatment Plant      Central Coast RWQCB  
 311 Second Street, P.O. Box 1086                      895 Aerovista Place, Suite 101  
 San Juan Bautista, CA 95054-1086                      San Luis Obispo, CA 93401  
 Permit No. CA00479      Discharge No. 001-A              Report Year: 2006

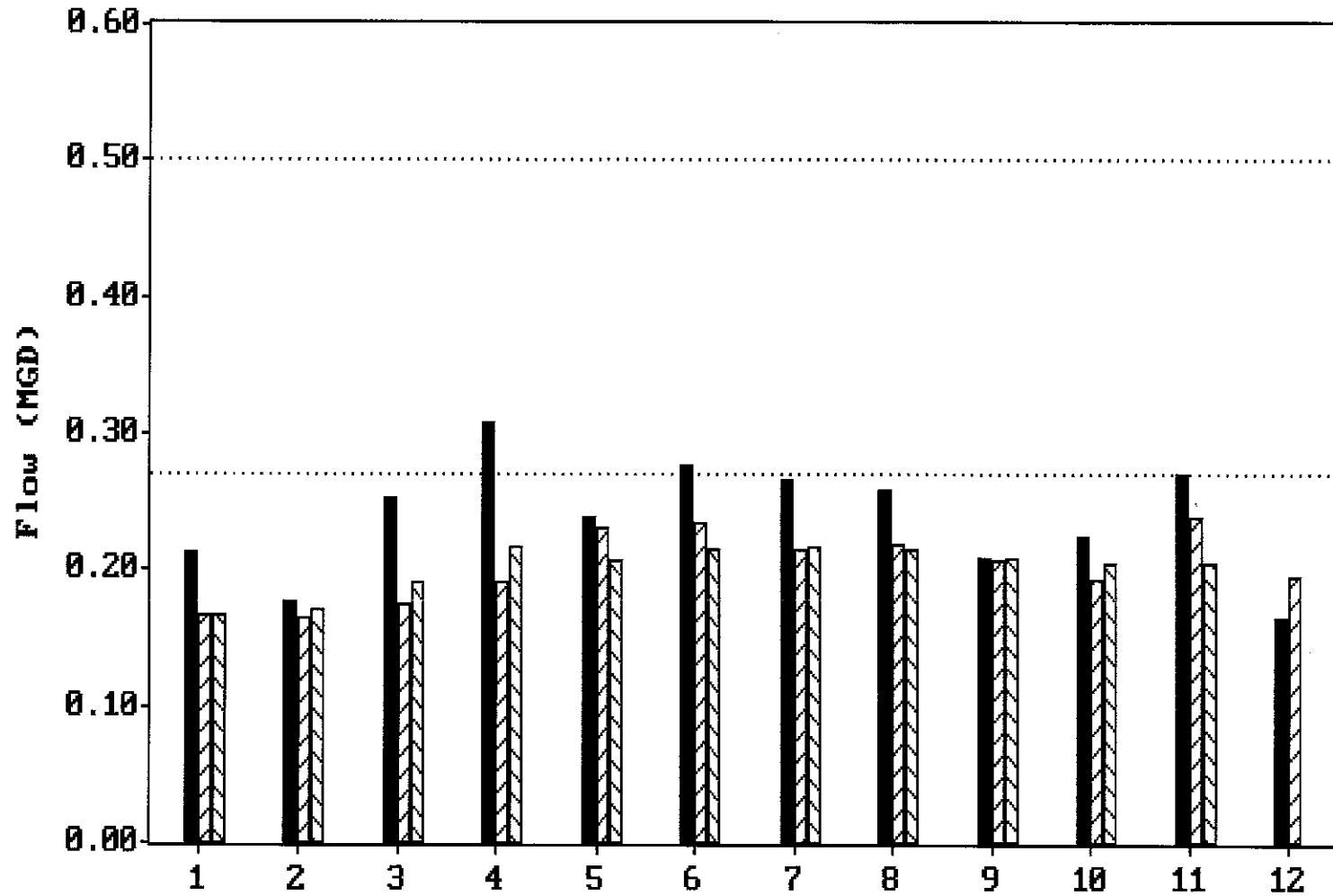
MONTH	DIS OXYGEN				TEMP				PH				TURBIDITY				ACUTE TOXC			
	Downstream, Single Samples				Downstream, Single Samples				Downstream, Single Samples				Downstream, Single Samples + S				Effluent, Single Samples			
	mg/L		counts		deg C		counts		std units		counts		NTU		counts		pass/fail		counts	
	MAX	MIN	AVG	Ex/Total	MAX	MIN	AVG	Ex/Total	MAX	MIN	AVG	Ex/Total	MAX	MIN	AVG	Ex/Total	MAX	MIN	AVG	Ex/Total
JAN-06																				
FEB-06																				
MAR-06	11.5	11.5	11.5	0 1	12.8	12.8	12.8	0 1	7.2	7.2	7.2	0 1	4.3	4.3	4.3	0 1				
APR-06	7.1	7.1	7.1	0 1	14.5	14.5	14.5	0 1	7.1	7.1	7.1	0 1	4.9	4.9	4.9	0 1				
MAY-06																				
JUN-06																	1	0	0	0 2
JUL-06																				
AUG-06																				
SEP-06																				
OCT-06																				
NOV-06																				
DEC-06	8.4	8.4	8.4	0 1	12.8	12.8	12.8	0 1	7.4	7.4	7.4	0 1	2.6	2.6	2.6	0 1				
ANNUAL MAXIMUM	11.5				14.5				7.4				4.9				1			
ANNUAL MINIMUM		7.1				12.8				7.1				2.6				0		
ANNUAL AVERAGE			9.0			13.4				7.2				3.9					0	
TOTAL				0 3				0 3				0 3				0 3				0 2

DISCHARGER SELF MONITORING REPORT

San Juan Bautista Wastewater Treatment Plant      Central Coast RWQCB  
 311 Second Street, P.O. Box 1086                      895 Aerovista Place, Suite 101  
 San Juan Bautista, CA 95054-1086                      San Luis Obispo, CA 93401  
 Permit No. CA00479      Discharge No. 001-A              Report Year: 2006

MONTH	CHRNFATTXS				CHRNFATTXW				CHRNDPHTXS				CHRNDPHTXR				CHRNSELTX			
	Effluent, Single Samples				Effluent, Single Samples				Effluent, Single Samples				Effluent, Single Samples				Effluent, Single Samples			
	TUc	counts	Ex/Total		TUc	counts	Ex/Total		TUc	counts	Ex/Total		TUc	counts	Ex/Total		TUc	counts	Ex/Total	
MAX	MIN	AVG		MAX	MIN	AVG		MAX	MIN	AVG		MAX	MIN	AVG		MAX	MIN	AVG		
JAN-06																				
FEB-06																				
MAR-06																				
APR-06																				
MAY-06																				
JUN-06	1	>1	>1	0 2	1	>1	>1	0 2	1	1	1	0 1	1	1	1	0 1	1	1	1	0 1
JUL-06																				
AUG-06																				
SEP-06																				
OCT-06																				
NOV-06																				
DEC-06																				
ANNUAL MAXIMUM	1				1				1				1				1			
ANNUAL MINIMUM		>1				>1				1				1				1		
ANNUAL AVERAGE			>1				>1				1				1				1	
TOTAL				0 2				0 2				0 1				0 1				0 1

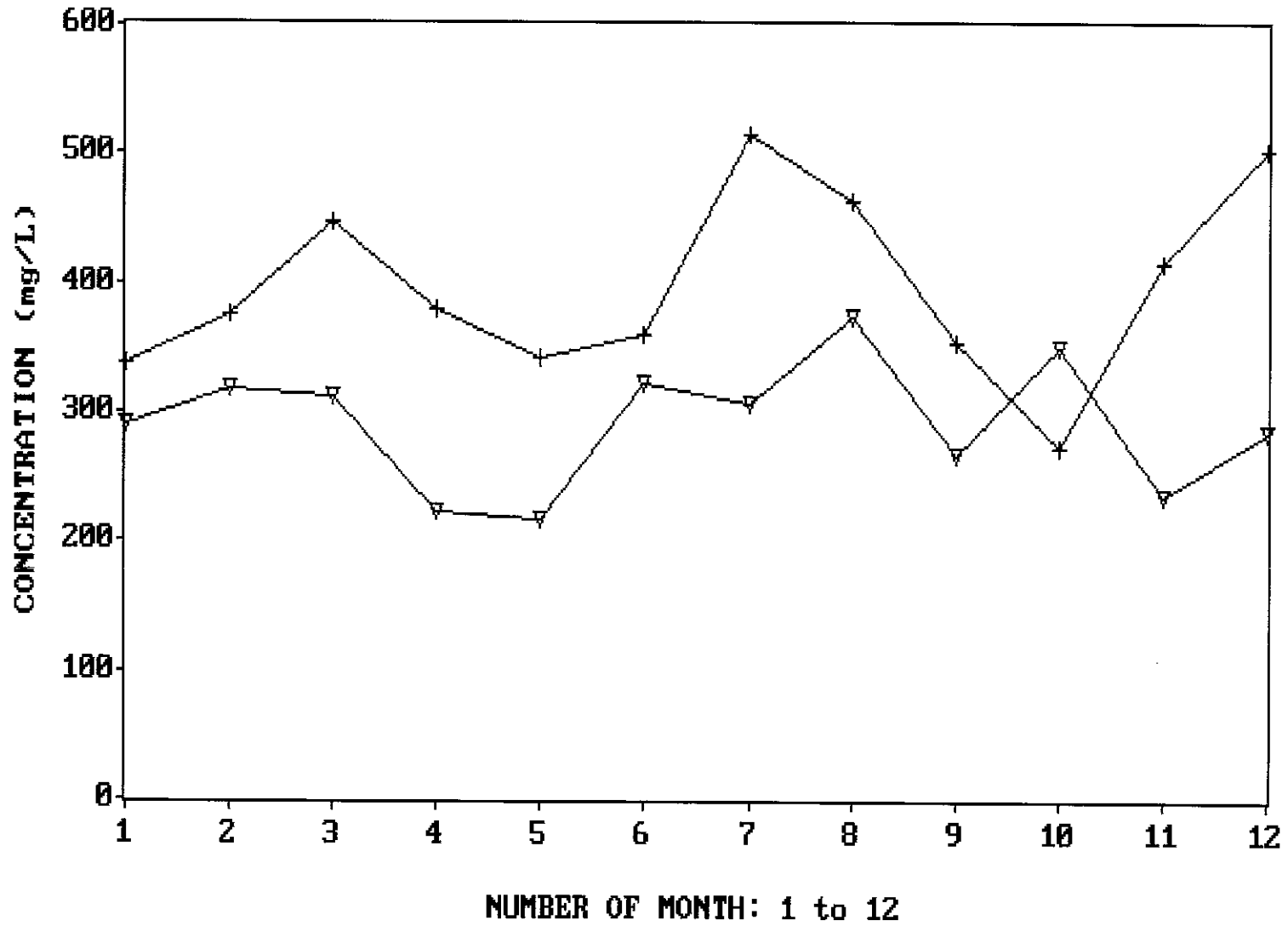
**SAN JUAN BAUTISTA WASTEWATER TREATMENT PLANT**  
**Monthly Influent & Effluent Flow - 2006**



NUMBER OF MONTH: 1 to 12

Influent    
  Eff Apr-Oct    
  Eff Nov-Mar    
 .. Limit A-O .. Limit N-M

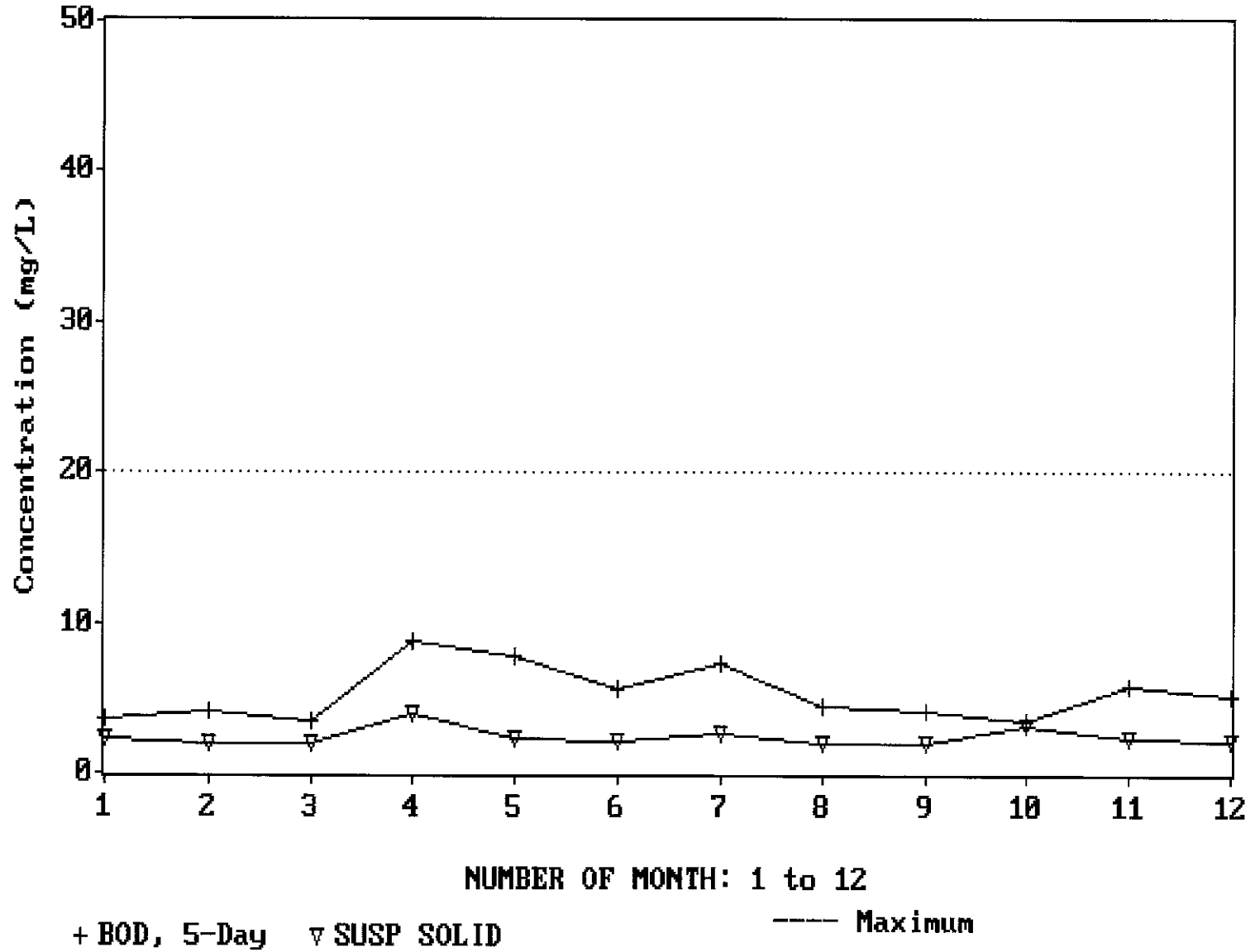
SAN JUAN BAUTISTA WASTEWATER TREATMENT PLANT  
Monthly Influent BOD and TSS - 2006



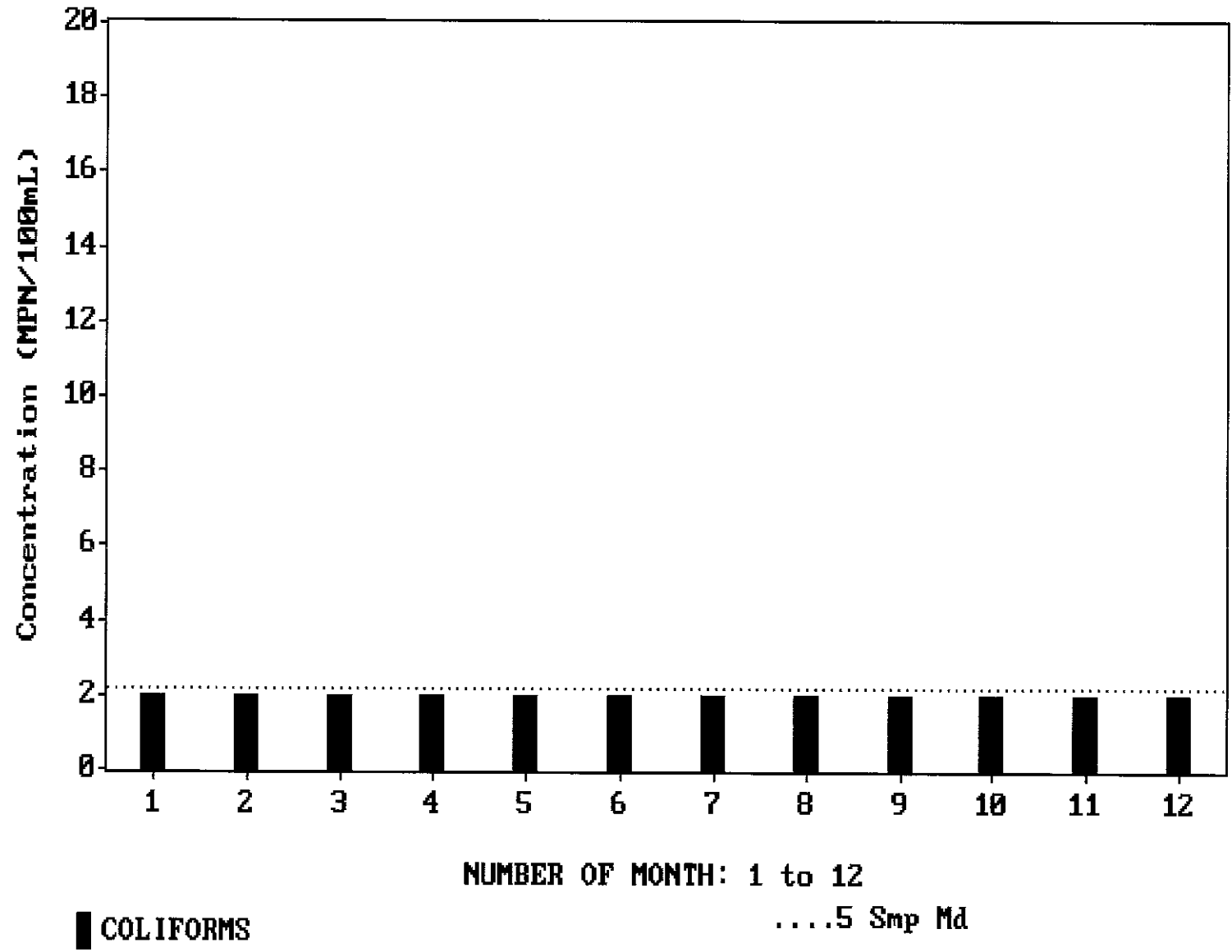
+ SUSP SOLID ∇ BOD, 5-Day

# SAN JUAN BAUTISTA WASTEWATER TREATMENT PLANT

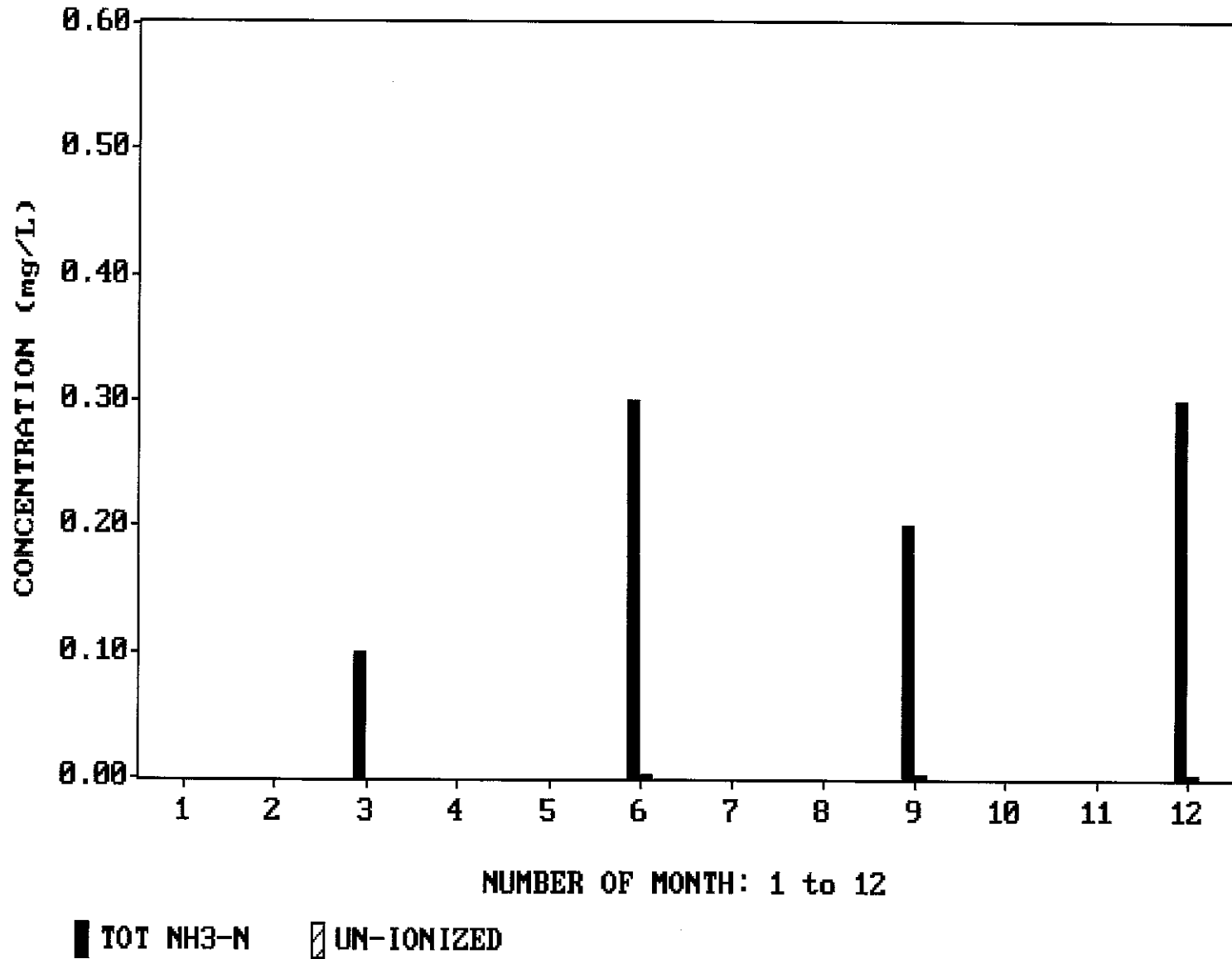
## Monthly Effluent BOD and TSS - 2006



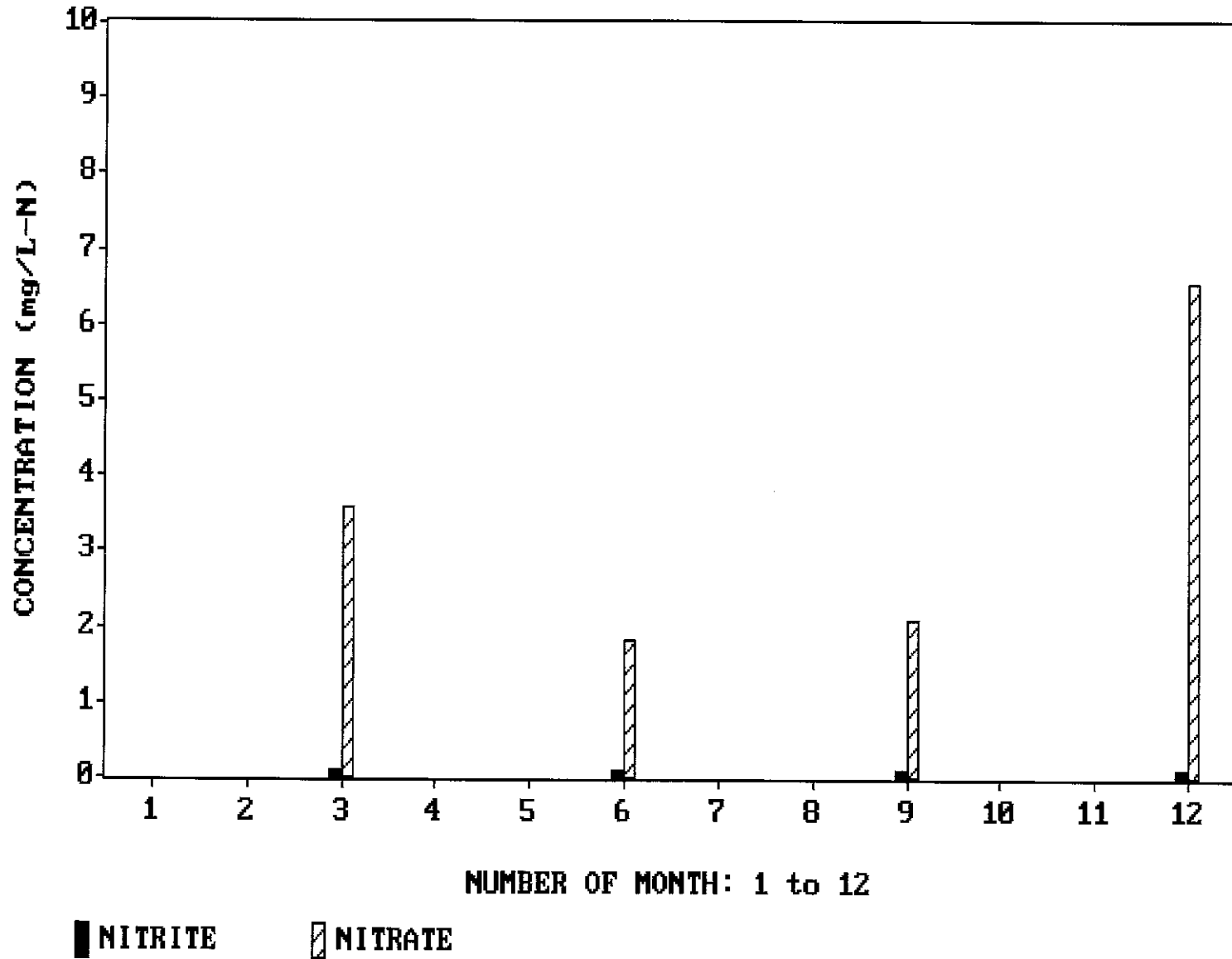
SAN JUAN BAUTISTA WASTEWATER TREATMENT PLANT  
Monthly Effluent Coliforms - 2006



SAN JUAN BAUTISTA WASTEWATER TREATMENT PLANT  
Effluent Monitoring: Total and Un-ionized Ammonia - 2006

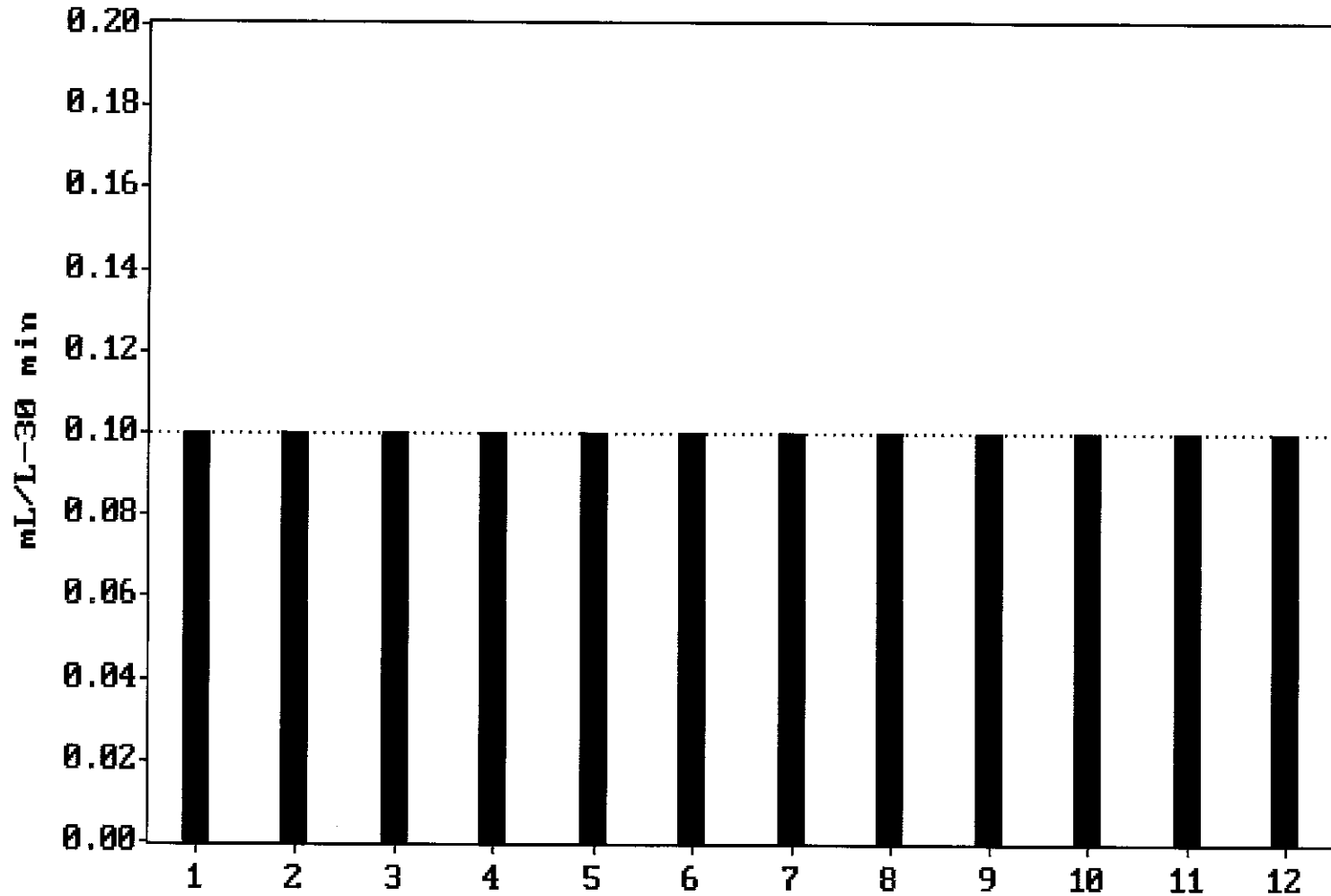


SAN JUAN BAUTISTA WASTEWATER TREATMENT PLANT  
Effluent Monitoring: Nitrate and Nitrite - 2006



# SAN JUAN BAUTISTA WASTEWATER TREATMENT PLANT

## Monthly Effluent Settlable Solids - 2006

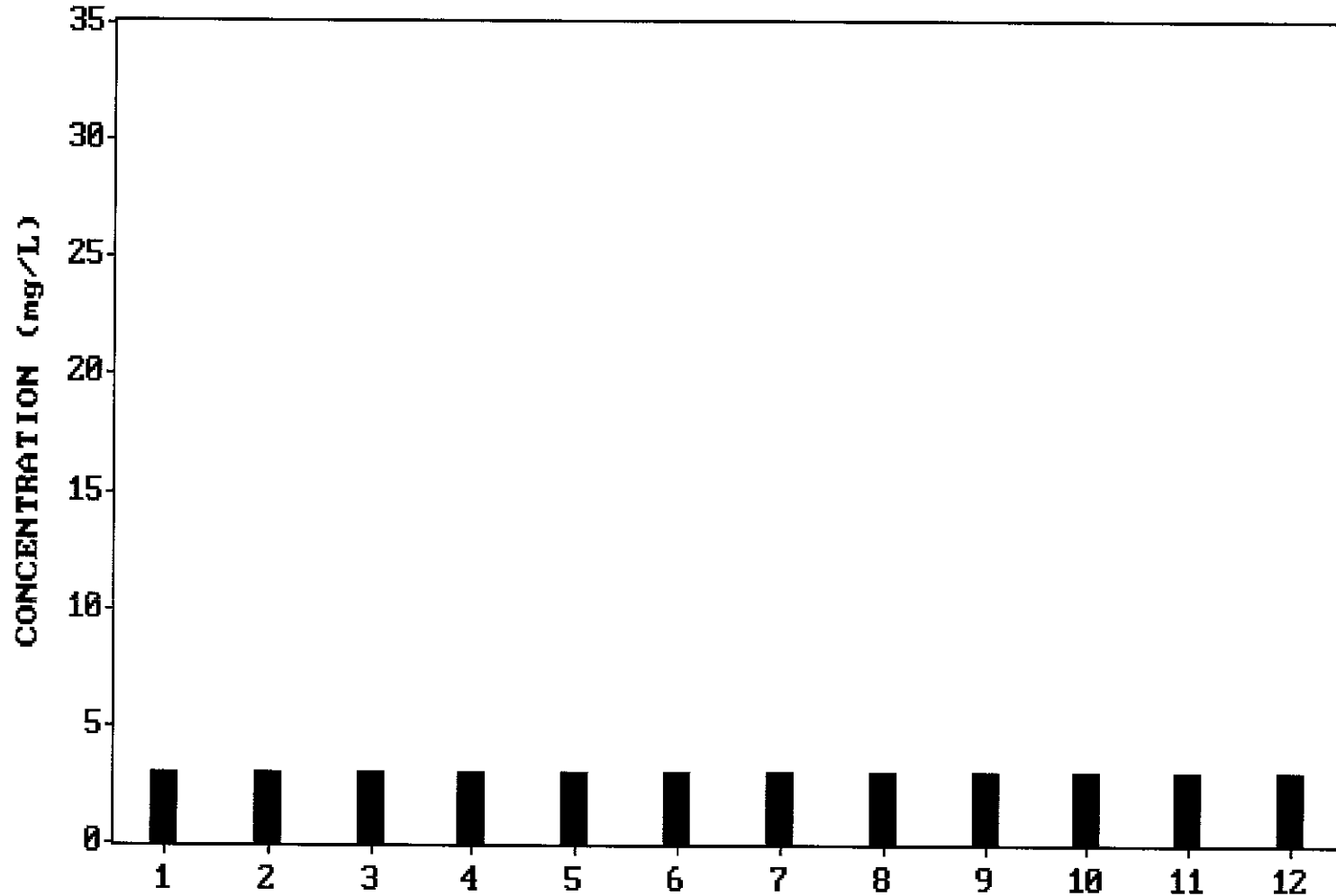


■ SETT SOLID

.... Maximum

SAN JUAN BAUTISTA WASTEWATER TREATMENT PLANT

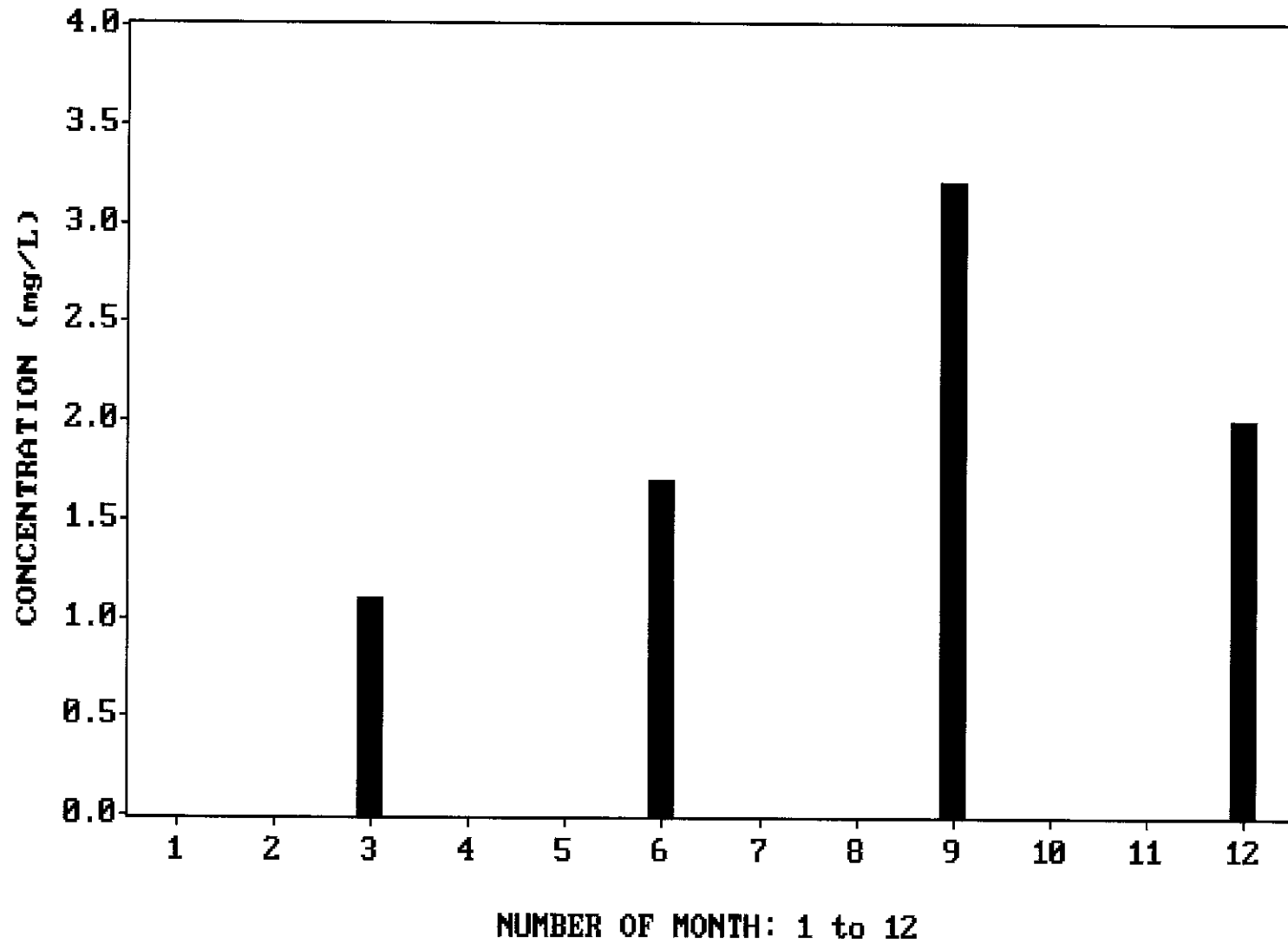
Monthly Effluent Oil and Grease - 2006



NUMBER OF MONTH: 1 to 12

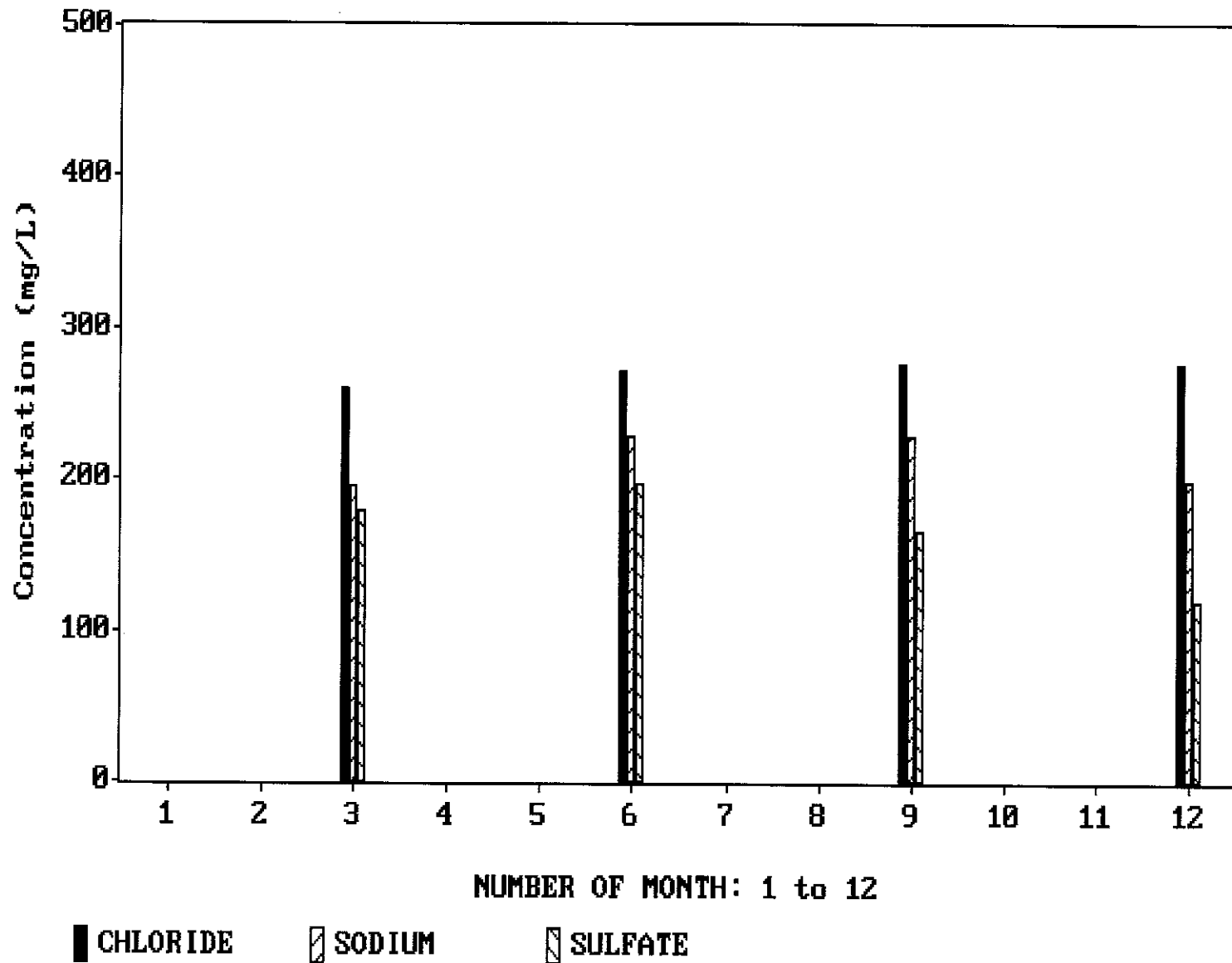
■ OIL/GREASE

SAN JUAN BAUTISTA WASTEWATER TREATMENT PLANT  
Effluent Monitoring: Total Phosphorous - 2006



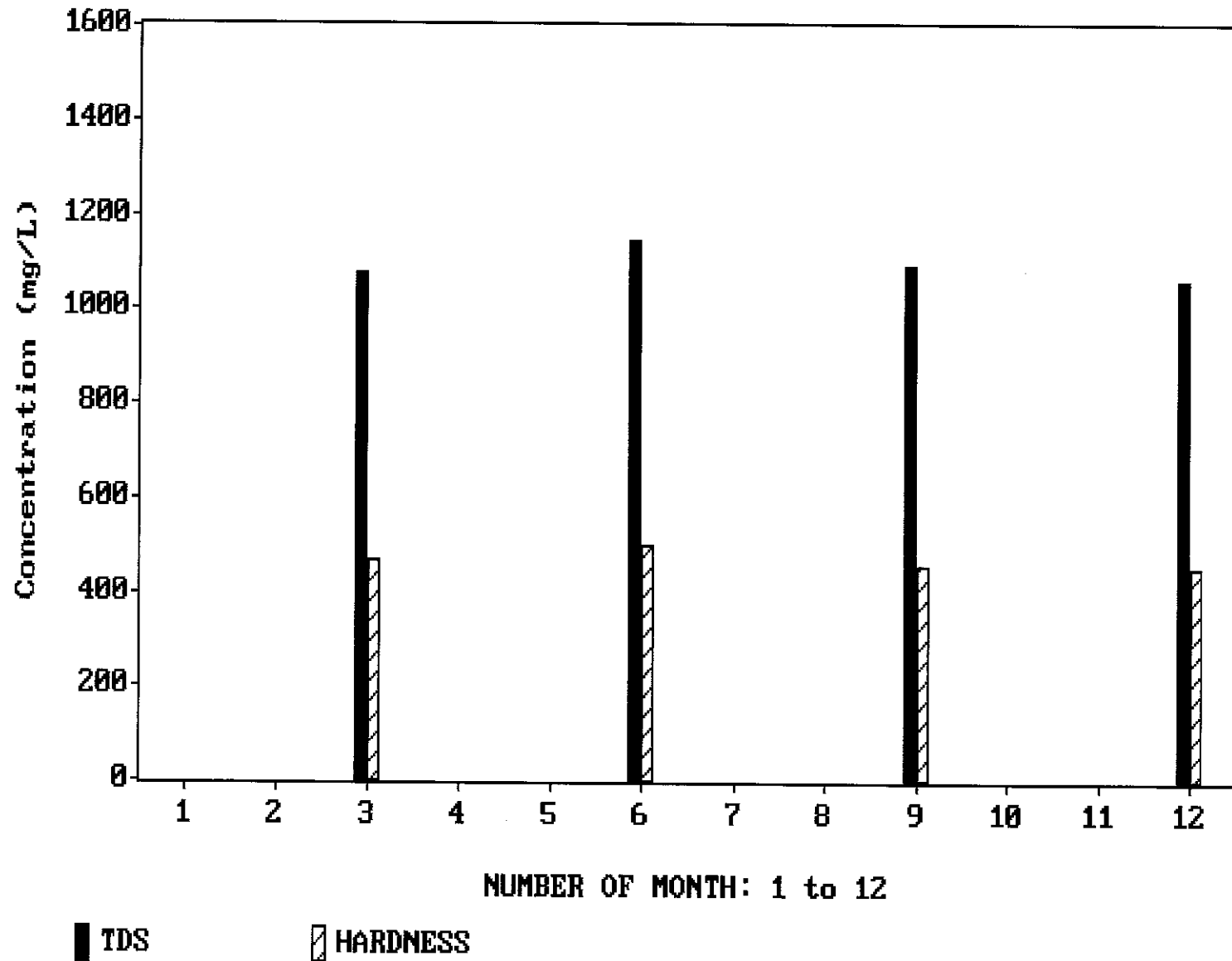
■ TOT PHOSPH

SAN JUAN BAUTISTA WASTEWATER TREATMENT PLANT  
Effluent Monitoring: Chloride, Sodium, Sulfate - 2006

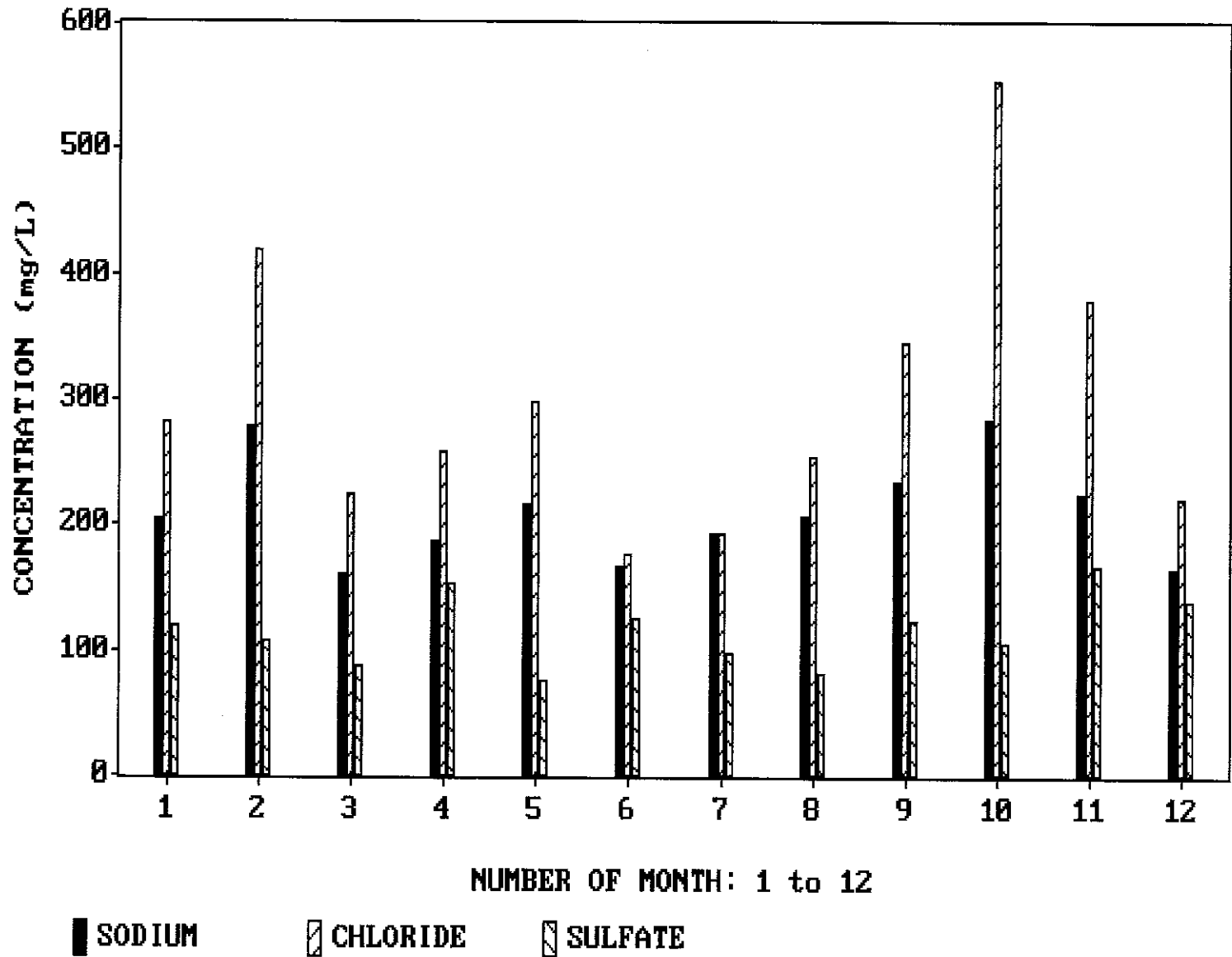


# SAN JUAN BAUTISTA WASTEWATER TREATMENT PLANT

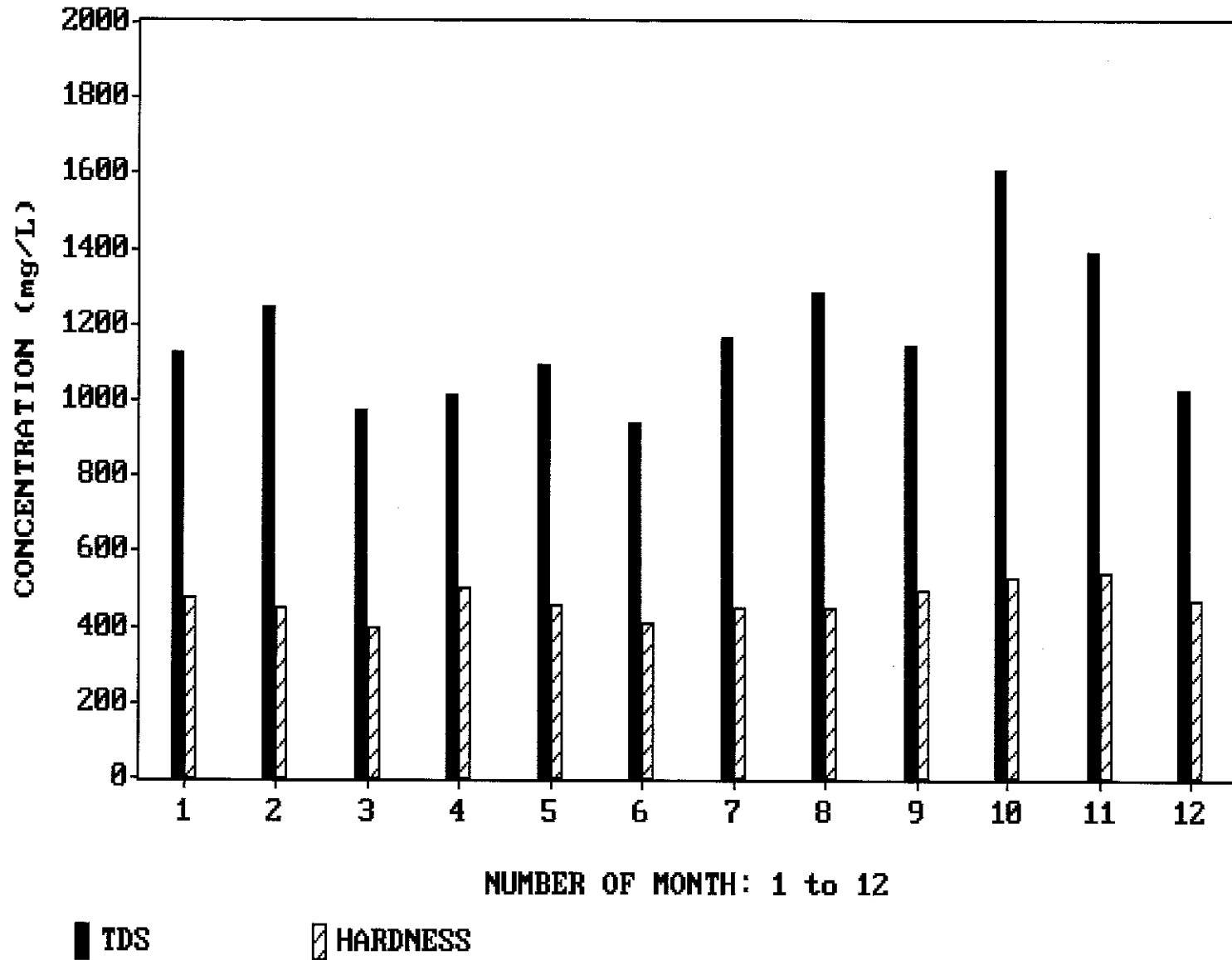
## Effluent Monitoring: TDS, Hardness



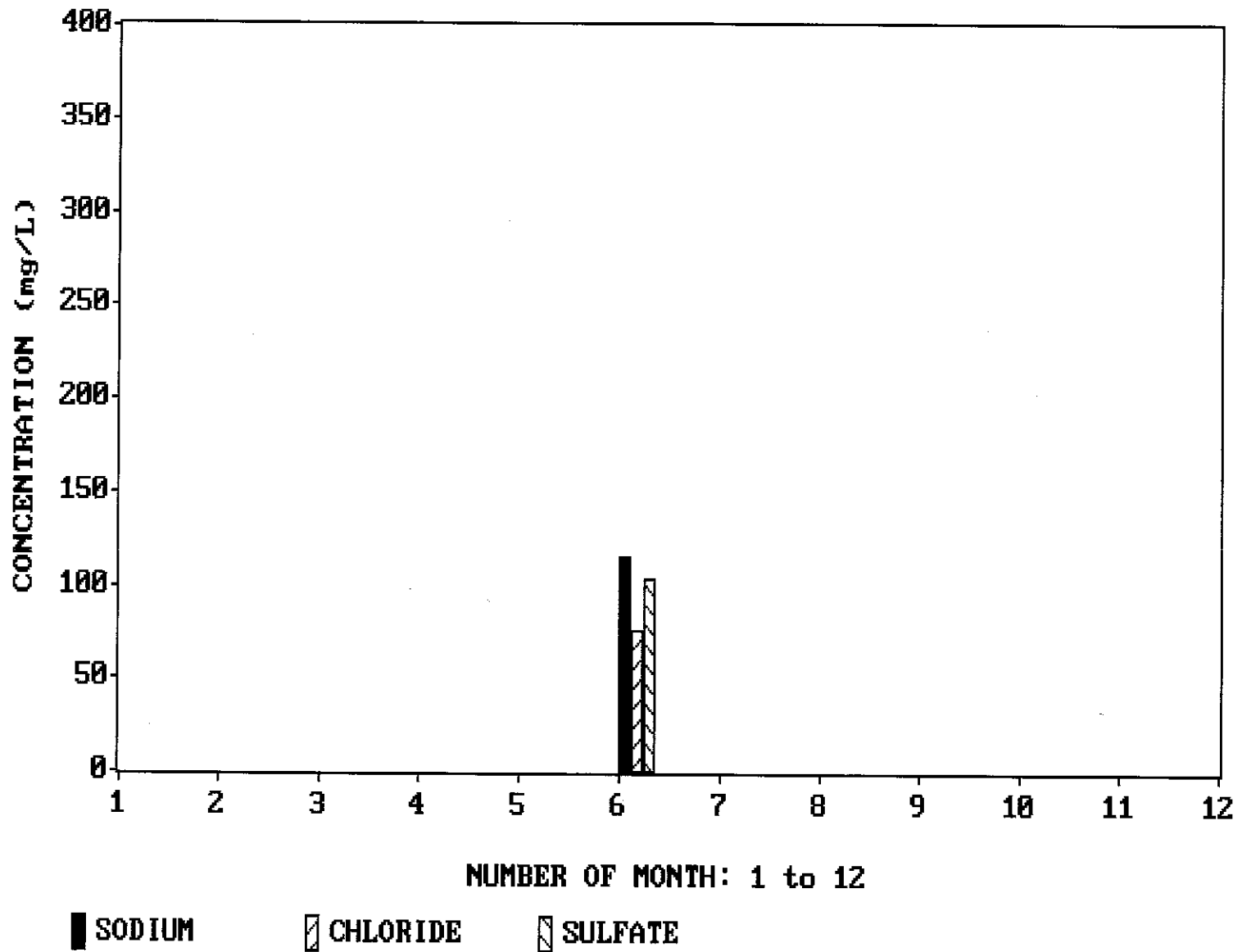
SAN JUAN BAUTISTA WASTEWATER TREATMENT PLANT  
Influent Monitoring: Sodium, Chloride, Sulfate - 2006



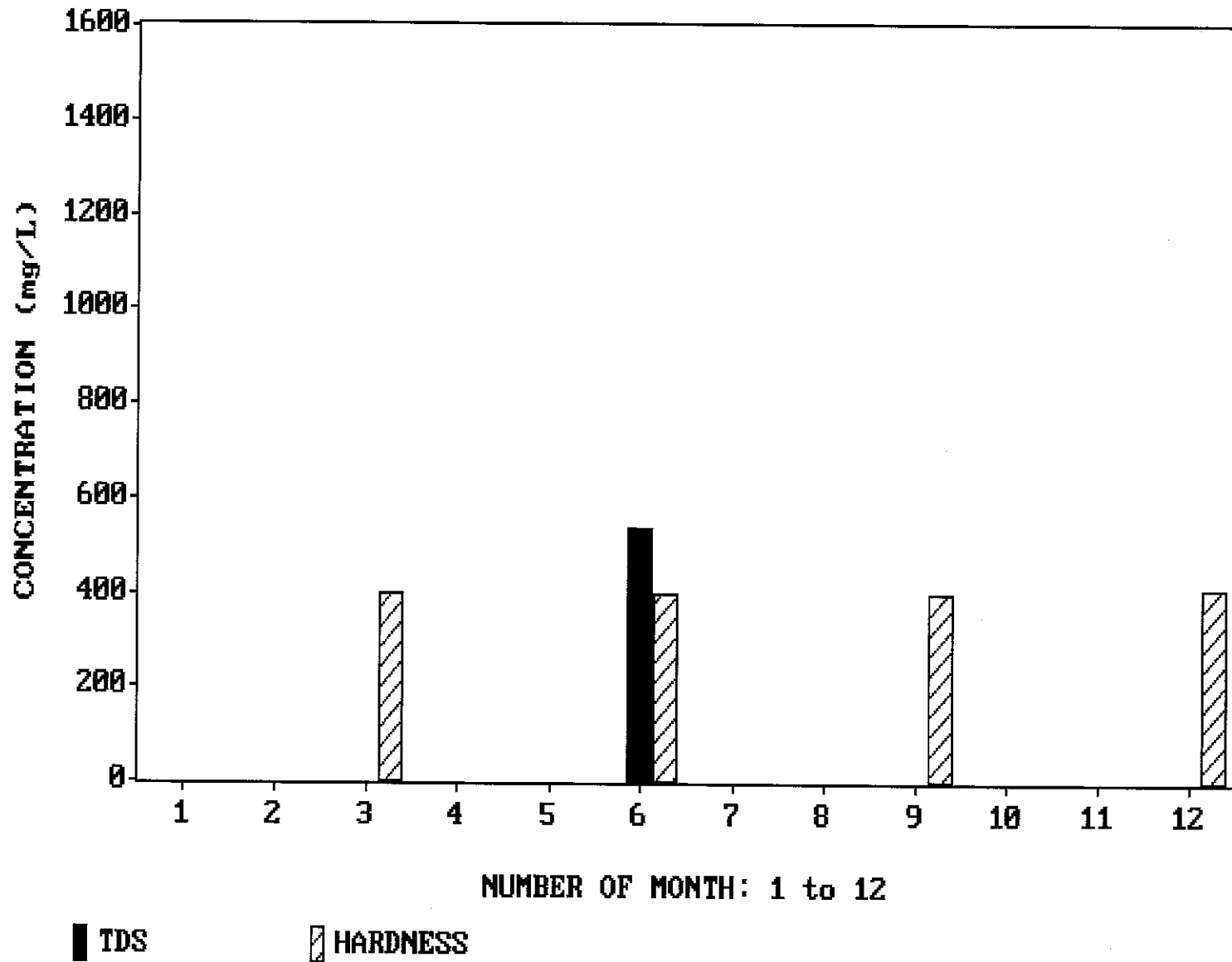
SAN JUAN BAUTISTA WASTEWATER TREATMENT PLANT  
Influent Monitoring: TDS and Hardness - 2006



SAN JUAN BAUTISTA WASTEWATER TREATMENT PLANT  
Water Supply Monitoring: Sodium, Chloride, Sulfate - 2006

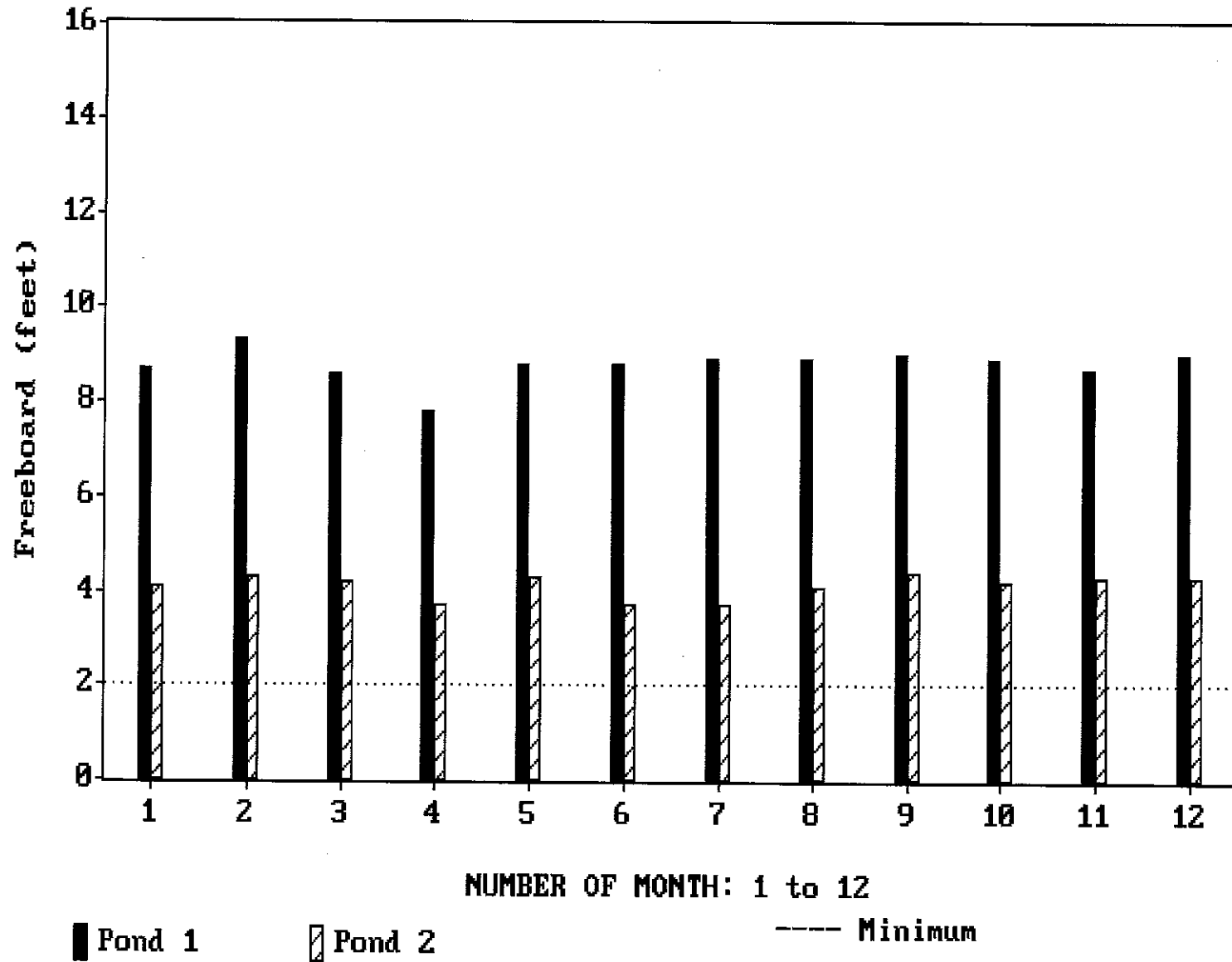


SAN JUAN BAUTISTA WASTEWATER TREATMENT PLANT  
Water Supply Monitoring: TDS and Hardness - 2006

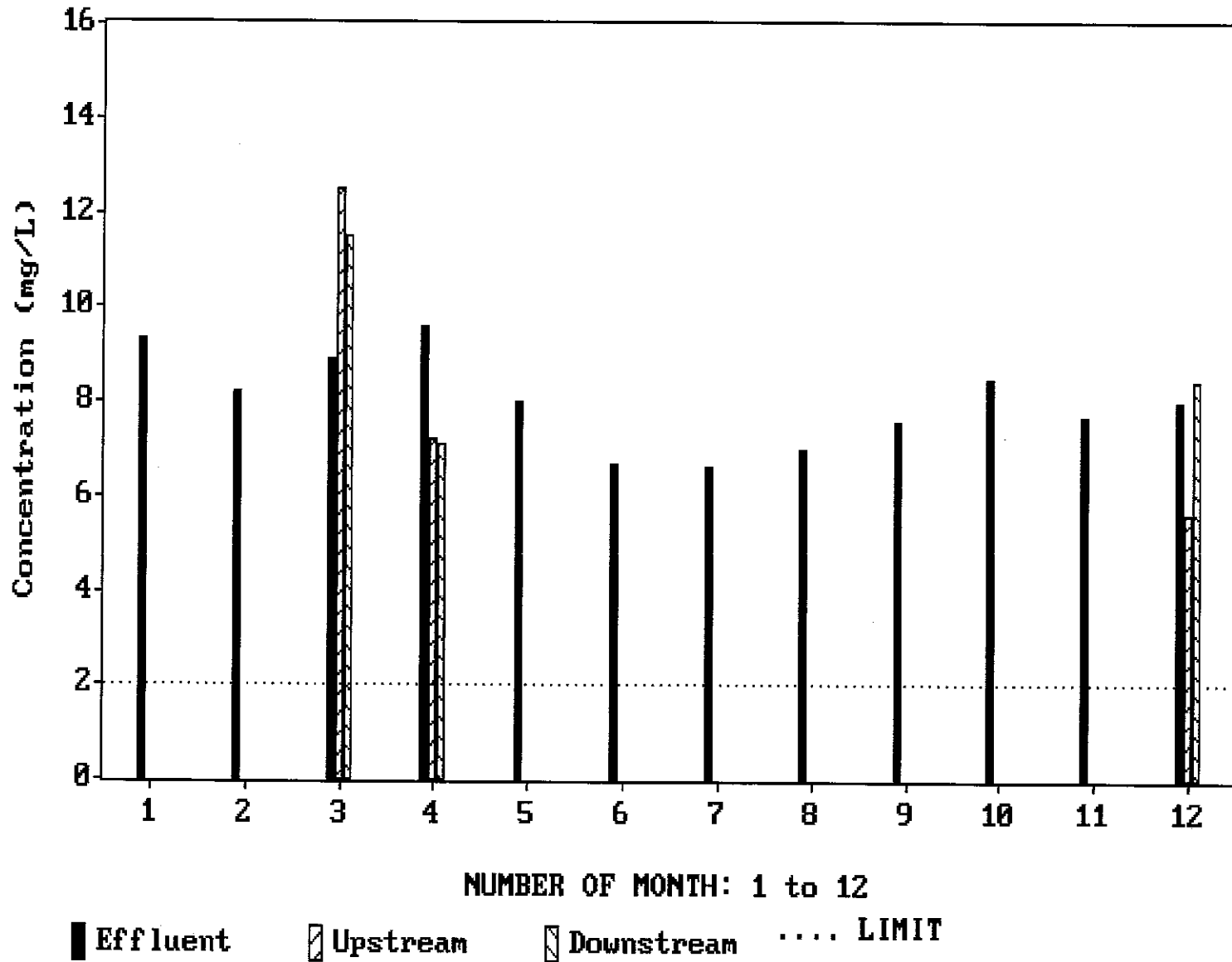


# SAN JUAN BAUTISTA WASTEWATER TREATMENT PLANT

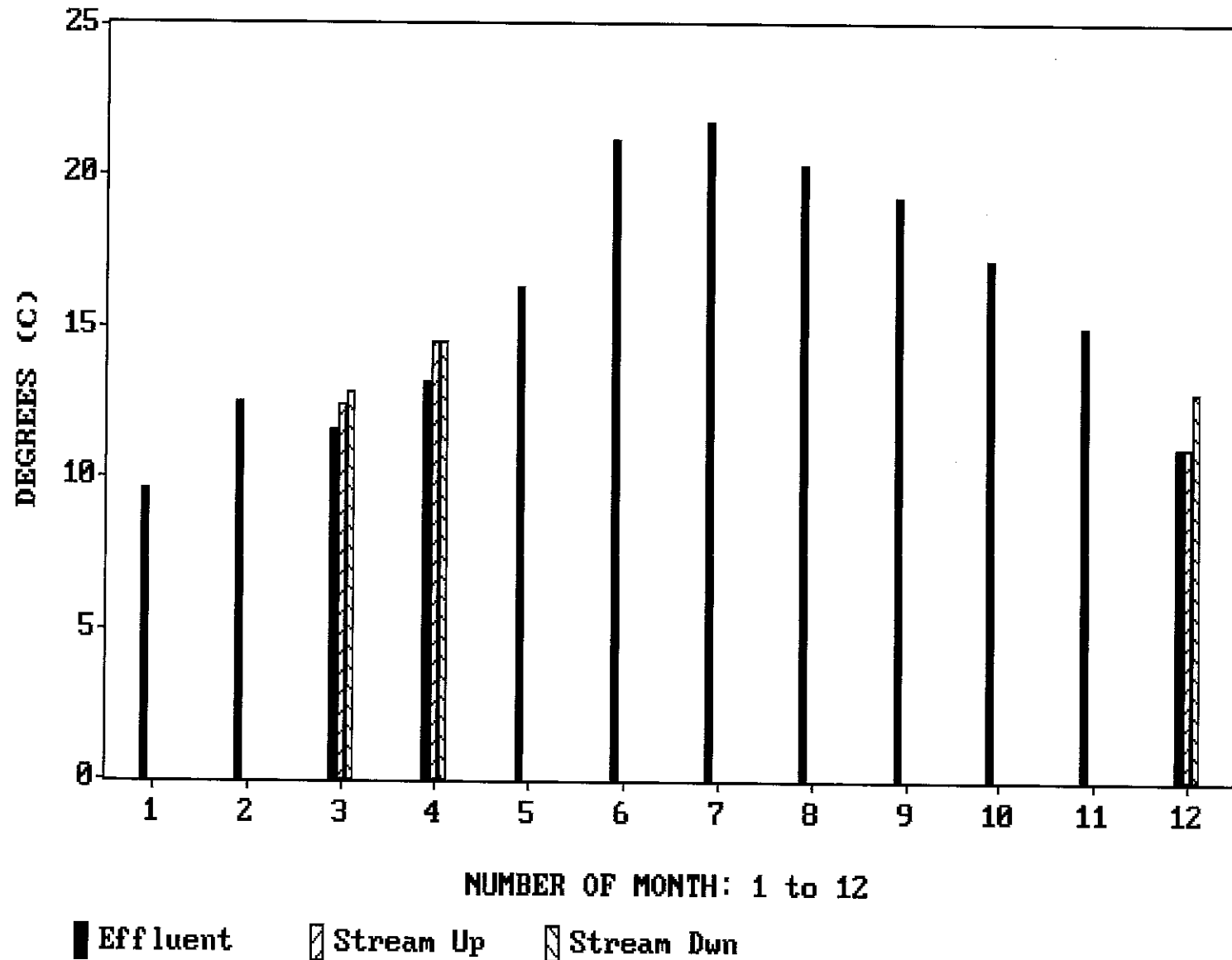
## Pond Freeboard



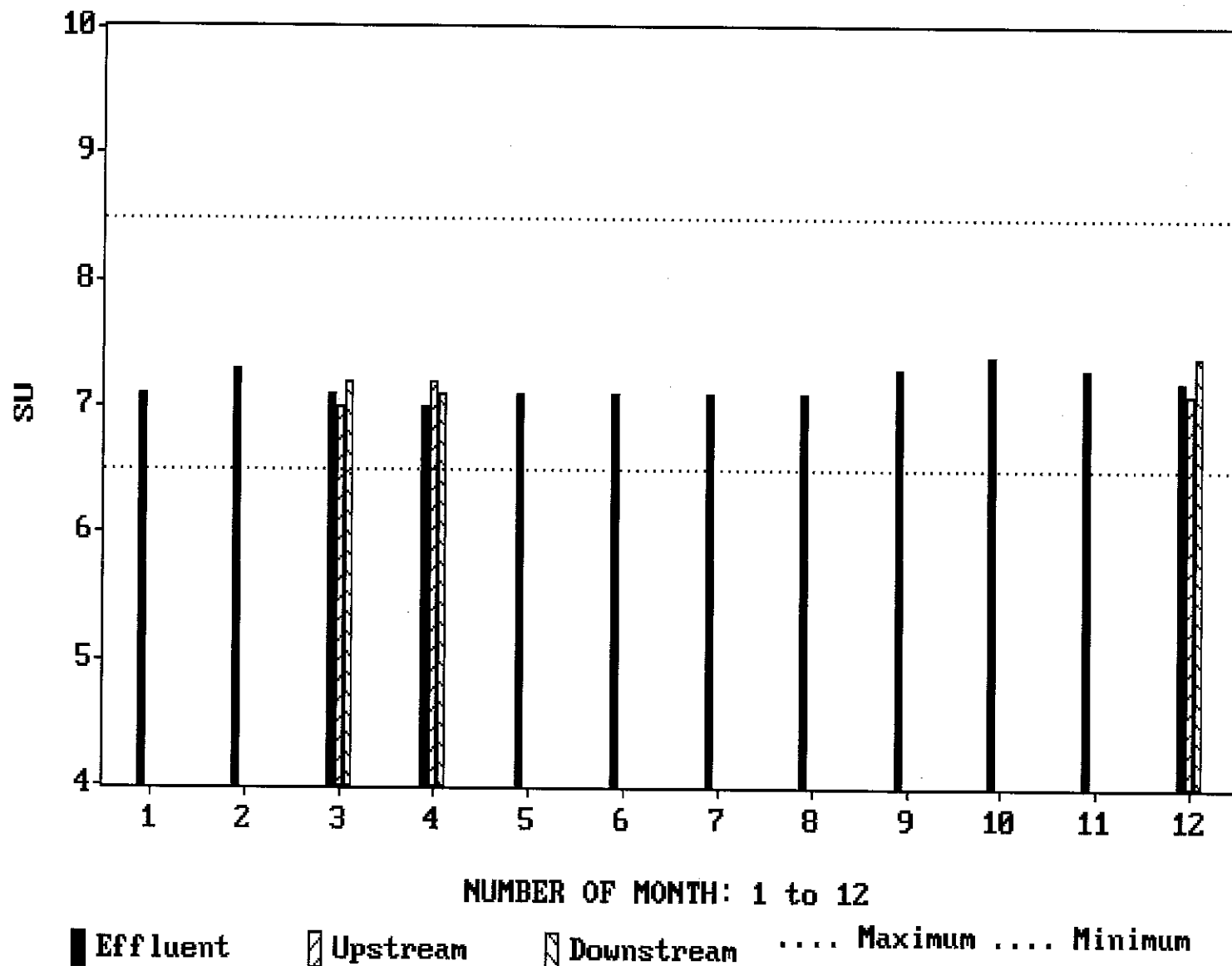
SAN JUAN BAUTISTA WASTEWATER TREATMENT PLANT  
Monthly Effluent & Stream Dissolved Oxygen - 2006



SAN JUAN BAUTISTA WASTEWATER TREATMENT PLANT  
Monthly Effluent & Stream Temperature - 2006



**SAN JUAN BAUTISTA WASTEWATER TREATMENT PLANT**  
**Monthly Effluent & Stream pH - 2006**



# SAN JUAN BAUTISTA WASTEWATER TREATMENT PLANT

## Stream Turbidity - 2006

